

MIG/MAG welding torches Push-Pull Plus

Air and liquid cooled



Note for liquid cooled torches:

To protect cable assembly components from excessive heat build up we recommend a post welding cooling cycle of at least four minutes.



The screw-type torch necks can be replaced quickly. They are available as either straight or 45° angled versions. A special interface between the handle and the torch neck makes it possible to turn the necks up to 360°. All torches, both air and liquid-cooled for capacities of up to 400 A, are based on the tried-and-trusted "MB" torch neck design.

The main areas of application for these welding torches include wharfs, manufacturers of containers and ships etc., as well as in vehicle and wagon building. Wherever exact and constant wire feeding is an absolute must.

The welding torches of the Push-Pull Plus series, specially developed for aluminum welding requirements and the use of thin wires, makes problem-free and consistent wire feed and constant wire feed possible, even with longer cable assemblies. A powerful, sturdy pull motor with potentiometer guarantees exact speed regulation. For an optimum wire feed without frictional loss, the contact pressure of the feeding rollers can be regulated precisely and easily directly on the handle. The ergonomic handle ensures optimum, low-fatigue handling.

- Identical motor characteristics as standard Push-Pull
- Consistent and problem-free wire feeding thanks to a powerful pull motor
- Precise contact pressure regulation of the wire feeding rollers directly on the torch
- Available with optional potentiometer for speed regulation
- Wearing parts are identical to those of the tried-and-trusted MB torch series – minimised stocking
- Optimum torch cooling – long tool lives
- Sturdy design – long service life

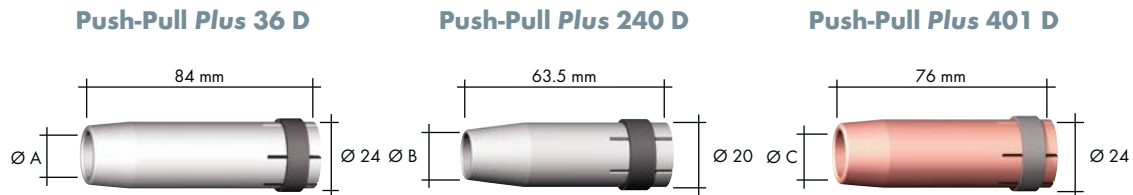
Type	Cooling	Rating		Duty cycle (%)	Wire size (mm)
		CO ₂	Mixed gas M21		
Push-Pull Plus 36 D	air	300 A	270 A	60	0.8-1.2
Push-Pull Plus 240 D	liquid	270 A	240 A	100	0.8-1.2
Push-Pull Plus 401 D	liquid	400 A	350 A	100	0.8-1.2

Torch complete (40 V motor)		Part-No.	Part-No.	Part-No.
Type		8 m without Poti	8 m with Poti	Swan neck
Push-Pull Plus 36 D; straight; GZ-2		085.0104.1	085.0106.1	085.0116.1
Push-Pull Plus 36 D; 45° bend; GZ-2		085.0105.1	085.0107.1	085.0117.1
Push-Pull Plus 240 D; straight; WZ-2		095.0110.1	095.0119.1	095.0040.1
Push-Pull Plus 240 D; 45° bend; WZ-2		095.0111.1	095.0120.1	095.0052.1
Push-Pull Plus 401 D; straight; WZ-2		095.0100.1	095.0114.1	095.0002
Push-Pull Plus 401 D; 45° bend; WZ-2		095.0101.1	095.0115.1	095.0015

Wire feeding roll	Ø 0.8	Ø 1.0	Ø 1.2
ST/AL	095.0064.1	095.0065.1	095.0066.1

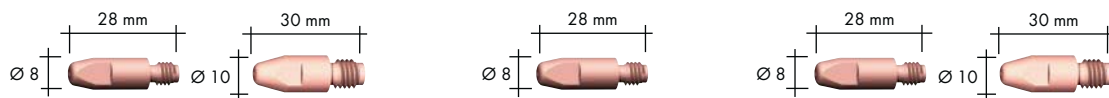
Push-Pull Plus 36 D, Push-Pull Plus 240 D, Push-Pull Plus 401 D

Wear parts



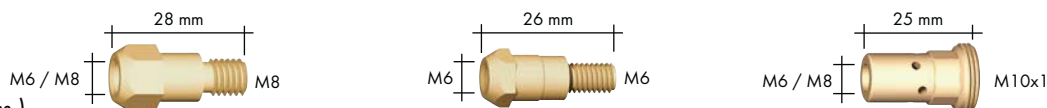
Gas nozzle (10 pcs.)

	Ø A		Ø B		Ø C	
Cylindrical	Ø 19	145.0045	Ø 17	145.0047	Ø 20	145.0051
Conical	Ø 16	145.0078 ¹	Ø 12.5	145.0080 ²	Ø 16	145.0085 ³
Tapered	Ø 12	145.0126	Ø 10	145.0128	Ø 14	145.0132



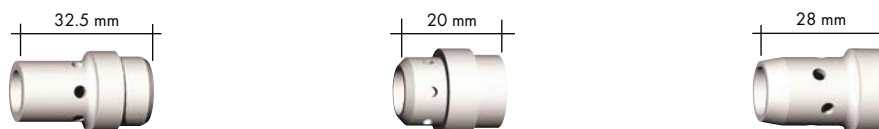
Contact tip (10 pcs.)

		M6	M8	M6	M6	M8
E-Cu	Ø 0.8	140.0051	140.0114	140.0051	140.0051	140.0114
	Ø 1.0	140.0242	140.0313	140.0242	140.0242	140.0313
	Ø 1.2	140.0379	140.0442 ¹	140.0379 ²	140.0379	140.0442 ³
E-Cu for Al	Ø 0.8	141.0001	141.0003	141.0001	141.0001	141.0003
	Ø 1.0	141.0006	141.0008	141.0006	141.0006	141.0008
	Ø 1.2	141.0010	141.0015	141.0010	141.0010	141.0015
CuCrZr	Ø 0.8	140.0054	140.0117	140.0054	140.0054	140.0117
	Ø 1.0	140.0245	140.0316	140.0245	140.0245	140.0316
	Ø 1.2	140.0382	140.0445	140.0382	140.0382	140.0445



Contact tip holder (10 pcs.)

M6	142.0005	142.0003 ²	142.0008
M8	142.0020 ¹	-	142.0022 ³



Gas diffuser (10 pcs.)

Standard	014.0261 ¹	012.0183 ²	030.0145 ³
Long life	014.0026	-	030.0037
Ceramic	014.0023	-	030.0190

Liner

Neck liner ⁴ 0.8-1.0 mm	149.0260.3	149.0264.3	149.0264.3
Neck liner ⁴ 1.2 mm	149.0261.3 ¹	149.0265.3 ²	149.0265.3 ³
Neck liner ⁵ 0.8-1.0 mm	149.0262.3	149.0266.3	149.0266.3
Neck liner ⁵ 1.2 mm	149.0263.3 ¹	149.0267.3 ²	149.0267.3 ³
Liner blank 0.8 mm	122.0010	122.0010	122.0010
Liner blank 1.0-1.2 mm	122.0040	122.0040	122.0040
Liner insulated 0.8 mm	124.0169	124.0169	124.0169
PTFE liner 0.8 mm	126.0013	126.0013	126.0013
PTFE liner 1.0-1.2 mm	126.0030	126.0030	126.0030
Carb. PTFE liner 0.8 mm	127.0015	127.0015	127.0015
Carb. PTFE l. 1.0-1.2 mm	127.0009	127.0009	127.0009
PA liner 1.0-1.2 mm	128.0019 ¹	128.0019 ²	128.0019 ³

¹ Included in the standard equipment for complete torches Push-Pull Plus 36 D.

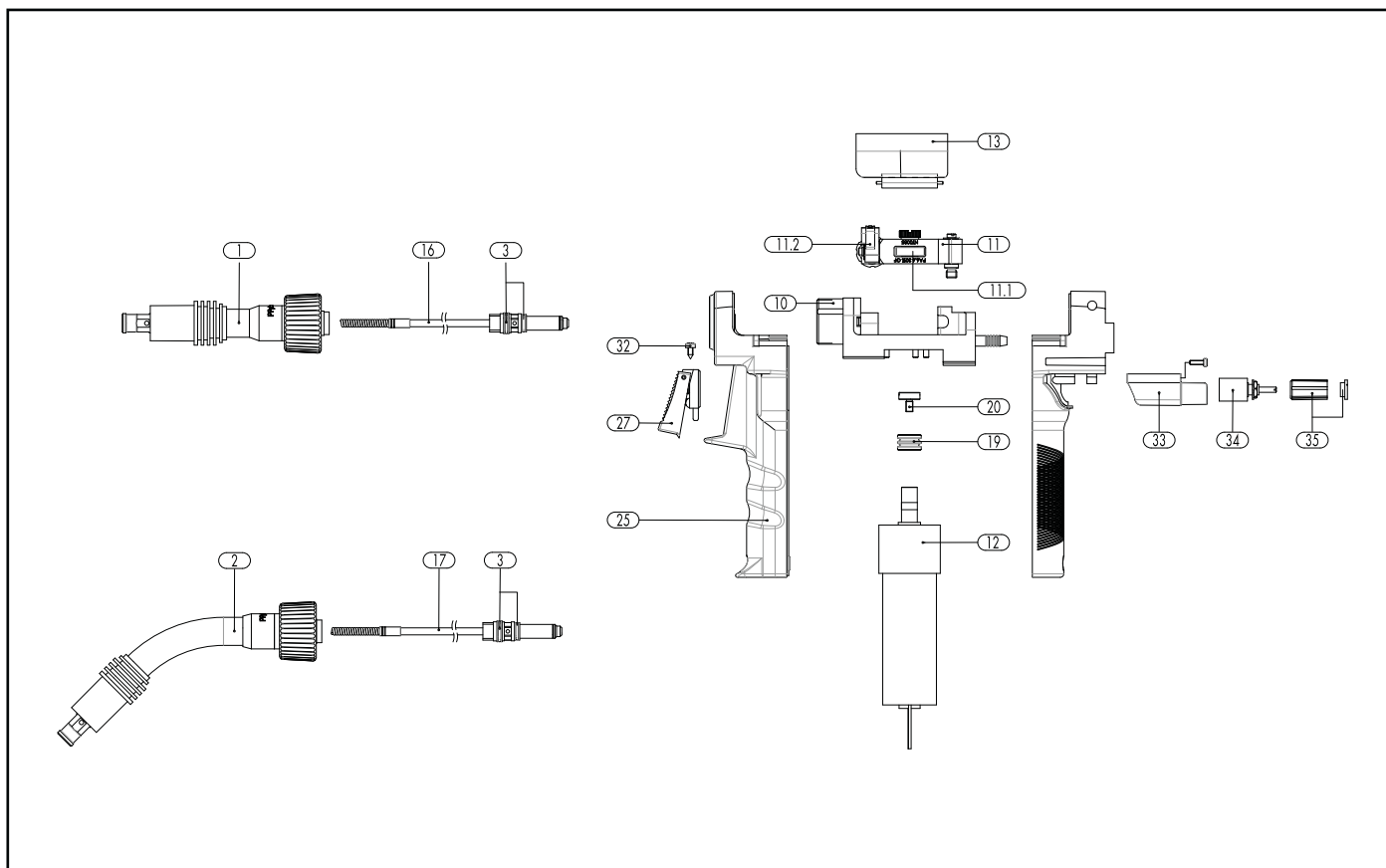
² Included in the standard equipment for complete torches Push-Pull Plus 240 D.

³ Included in the standard equipment for complete torches Push-Pull Plus 401 D.

⁴ For straight torch necks (0°).

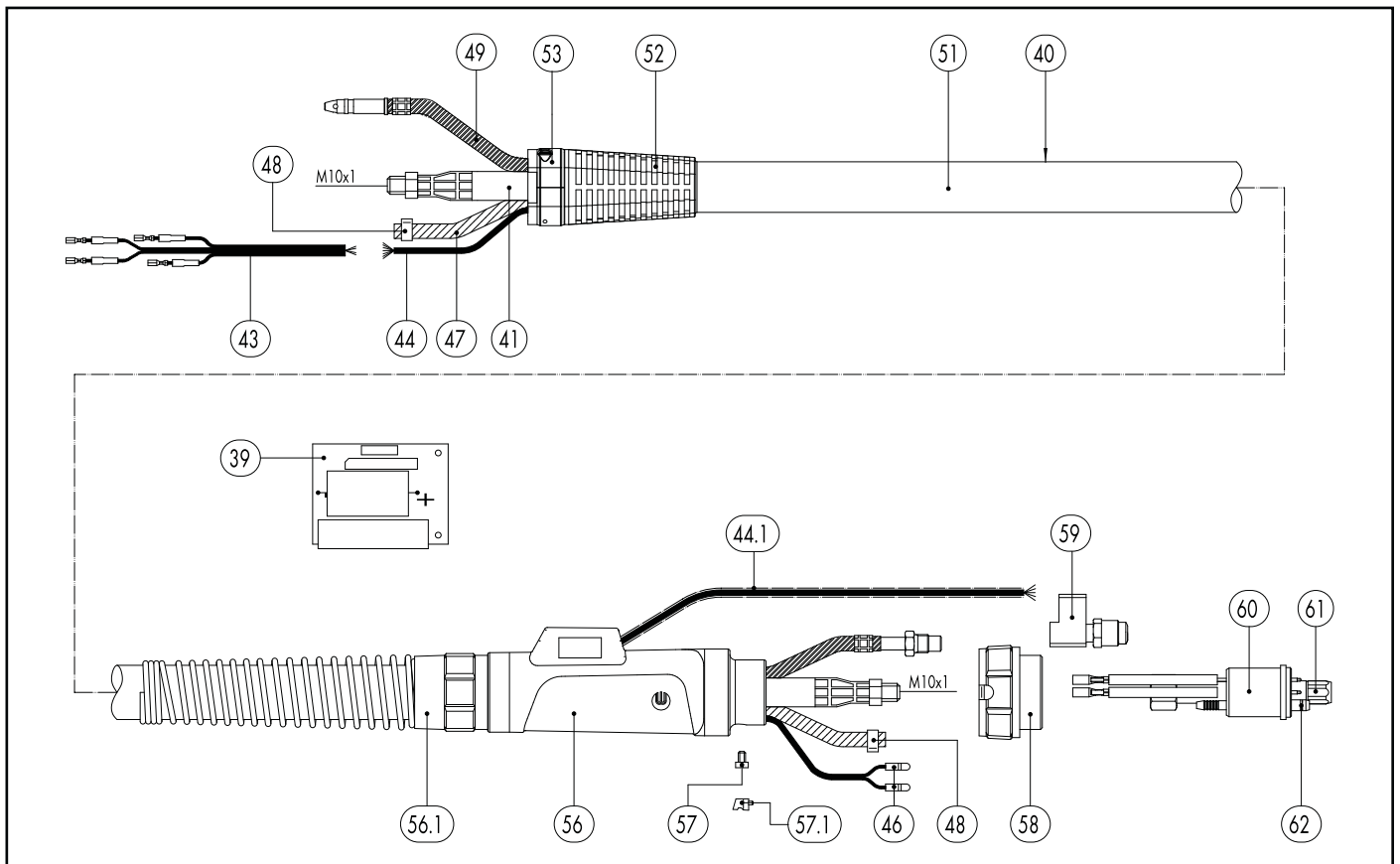
⁵ For bended torch necks (45°).

MIG/MAG Welding Torches Push-Pull Plus 36 D



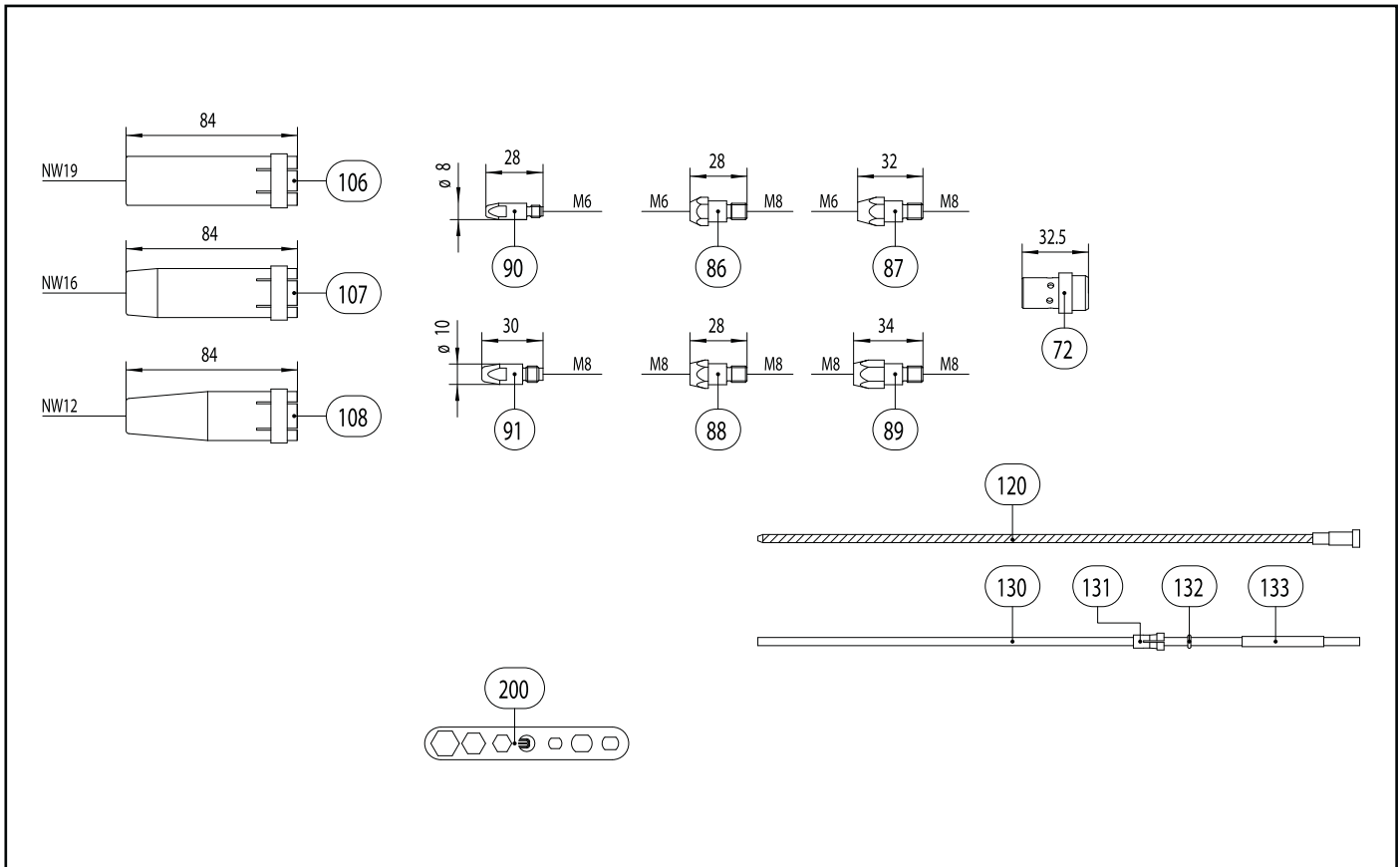
Pos.	Description	Units	Part-No.	Product-group
Torch				
	Push-Pull Plus 36 D; straight; 40 V motor; central adaptor GZ-2; 8.00 m		085.0104.1	1029
	Push-Pull Plus 36 D; 45° bent; 40 V motor; central adaptor GZ-2; 8.00 m		085.0105.1	1029
	Push-Pull Plus 36 D; straight; 40 V motor; poti 10 k-Ohm, central adaptor GZ-2; 8.00 m		085.0106.1	1029
	Push-Pull Plus 36 D; 45° bent; 40 V motor; poti 10 k-Ohm, central adaptor GZ-2; 8.00 m		085.0107.1	1029
Swan neck				
1	Swan neck Push-Pull Plus 36 D; straight		085.0116.1	1014
2	Swan neck Push-Pull Plus 36 D; 45° bent		085.0117.1	1014
3	Wear parts set gasket rings		085.0029	1095
Torch body, gear motor and equipment				
10	Torch adaptor cpl.		085.0019	1095
11	Pressure trigger cpl.		085.0018	1095
11.1	Pressure roll		085.0042	1095
11.2	Pressure button cpl.		085.0043	1095
12	Gear motor 24 V DC		085.0102.1	1095
12	Gear motor 40 V DC		085.0103.1	1095
13	Cover cpl.		400.1186	1095
16	Neckliner for wire Ø 0.8 - 1.0 mm (length=145 mm)	3 Pcs.	149.0260.3	1034
16	Neckliner for wire Ø 1.2 - 1.6 mm (length=145 mm)	3 Pcs.	149.0261.3	1034
17	Neckliner for wire Ø 0.8 - 1.0 mm (length=197 mm)	3 Pcs.	149.0262.3	1034
17	Neckliner for wire Ø 1.2 - 1.6 mm (length=197 mm)	3 Pcs.	149.0263.3	1034
19	Wire feed roll ST / AL 0.8 / 0.8 mm		095.0064.1	1095
19	Wire feed roll ST / AL 1.0 / 1.0 mm		095.0065.1	1095
19	Wire feed roll ST / AL 1.2 / 1.2 mm		095.0066.1	1095
20	Knurled screw M4	5 Pcs.	085.0113.5	1095

MIG/MAG Welding Torches Push-Pull Plus 36 D



Pos.	Description	Units	Part-No.	Product-group
Handle				
25	Handle cpl. incl. mounting screws and extension material		085.0017	1095
27	Trigger 2-pole		185.0100	1095
32	Sheet metal screw 2.9x6.5	20 Pcs.	079.0003	9010
33	Potentiometerhousing cpl.		085.0016	1095
!!!	IdentNr ¥187.0077¥ nicht gefunden...			
34	Potentiometer (2.0 k-Ohm)		187.0078	9010
34	Potentiometer (5.5 k-Ohm)		187.0076	9010
34	Potentiometer (10.0 k-Ohm)		187.0075	9010
34	Potentiometer (20.0 k-Ohm)		187.0079	9010
35	Potentiometer knob cpl.		085.0041	1095
Printed circuit board				
39	Printed circuit board for 42 V motor		080.0009	1095
Cable assembly				
40	Cable assembly cpl. 8.00 m with 7-pol. control leads without central adaptor GZ-2		085.0040	1095
41	Power cable cpl. Type 35		118.0074	1012
43	Control lead cpl. 4-pole (0.4 m)		101.0054	1095
46	Plug	20 Pcs.	175.0004	9010
47	Hose 30 black Ø 4.9x1.5	100 m	109.0040	4050
48	Hose clamp Ø 8.2 mm with ring (mark 8.7)	100 Pcs.	173.0005	9010
49	Wire conduit cpl. for 8.00 m		156.0273	1012
51	Fabrics hose 28x1.5 mm (40 m)	40 m	107.0091	4050
52	Cable support		400.1188	1095
53	Cable support fastening cpl.		400.1247	1095
56	Cable support machine side big cpl. ND 31		500.0342	9010
56.1	Cable support spring big ND 31		500.0274	9010

MIG/MAG Welding Torches Push-Pull Plus 36 D

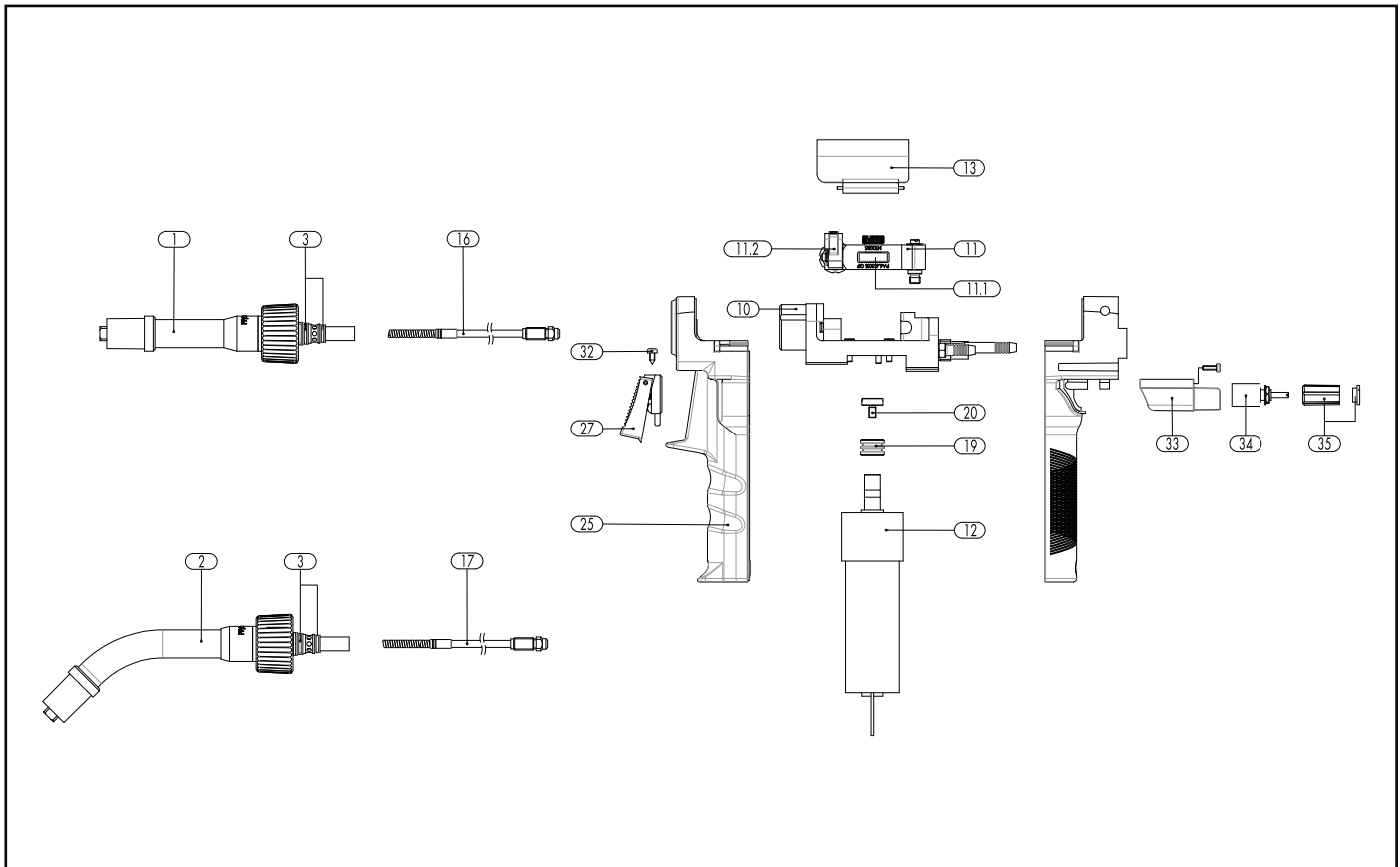


Pos.	Description	Units	Part-No.	Product-group
57	Pan head screw M4x6	20 Pcs.	000.0552	9010
57.1	Screw cap 1	20 Pcs.	500.0251	9010
58	Adaptor nut M33x2		500.0213	9010
59	Powerfitting cpl. M14x1		500.0460	1095
60	Central adaptor GZ-2		501.0018	1095
61	Coupling nut M10x1, plastic	5 Pcs.	501.D536.5	1595
62	O-Ring 4x1	20 Pcs.	165.0002	9010
44	Control lead 7-pole; 0,34 qmm (100 m)	100 m	100.0034	4050
	Wear parts			
72	Gas diffuser, white	10 Pcs.	014.0261	1032
72	Gas diffuser, long life	10 Pcs.	014.0026	1032
72	Gas diffuser, ceramic	10 Pcs.	014.0023	1032
86	Contact tip holder M6; 28.0 mm (short)	10 Pcs.	142.0005	1033
87	Contact tip holder M6; 32.0 mm (long)	10 Pcs.	142.0011	1033
88	Contact tip holder M8; 28.0 mm (short)	10 Pcs.	142.0020	1033
89	Contact tip holder M8; 34.0 mm (long)	10 Pcs.	142.0024	1033
90	Contact tip M6 E-Cu; Ø 0.8 (8x28)	10 Pcs.	140.0051	1030
90	Contact tip M6 E-Cu; Ø 1.0 (8x28)	10 Pcs.	140.0242	1030
90	Contact tip M6 E-Cu; Ø 1.2 (8x28)	10 Pcs.	140.0379	1030
90	Contact tip M6 CuCrZr; Ø 0.8 (8x28)	10 Pcs.	140.0054	1031
90	Contact tip M6 CuCrZr; Ø 1.0 (8x28)	10 Pcs.	140.0245	1031
90	Contact tip M6 CuCrZr; Ø 1.2 (8x28)	10 Pcs.	140.0382	1031
90	Contact tip M6 E-Cu; Ø 0.8 for alu wire (8x28)	10 Pcs.	141.0001	1030
90	Contact tip M6 E-Cu; Ø 1.0 for alu wire (8x28)	10 Pcs.	141.0006	1030
90	Contact tip M6 E-Cu; Ø 1.2 for alu wire (8x28)	10 Pcs.	141.0010	1030
90	Contact tip M6 CuCrZr silver-plated; Ø 0.8 (8x28)	10 Pcs.	147.0054	1031

MIG/MAG Welding Torches Push-Pull Plus 36 D

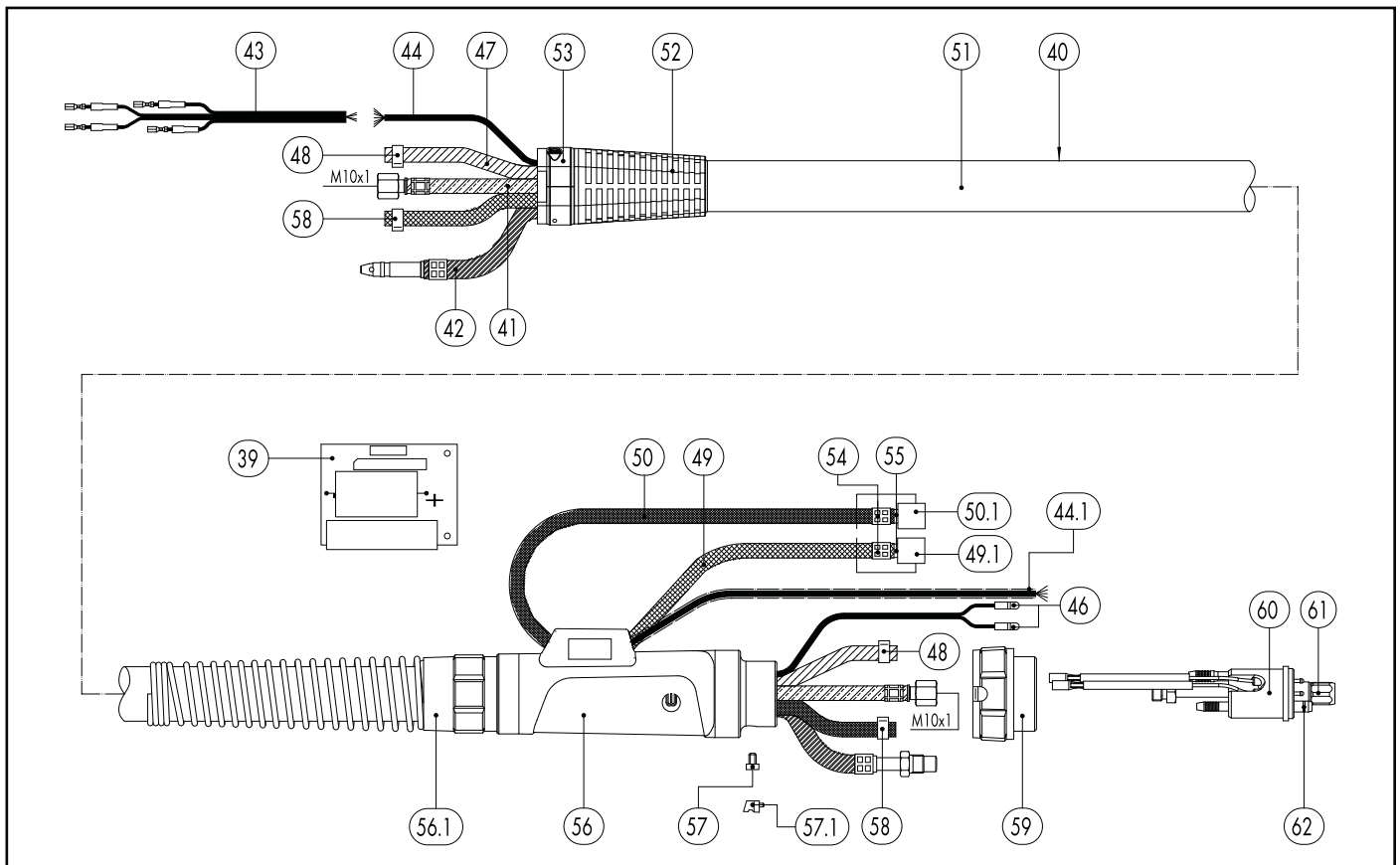
Pos.	Description	Units	Part-No.	Product-group
90	Contact tip M6 CuCrZr silver-plated; Ø 1.0 (8x28)	10 Pcs.	147.0245	1031
90	Contact tip M6 CuCrZr silver-plated; Ø 1.2 (8x28)	10 Pcs.	147.0382	1031
91	Contact tip M8 E-Cu; Ø 0.8 (10x30)	10 Pcs.	140.0114	1030
91	Contact tip M8 E-Cu; Ø 1.0 (10x30)	10 Pcs.	140.0313	1030
91	Contact tip M8 E-Cu; Ø 1.2 (10x30)	10 Pcs.	140.0442	1030
91	Contact tip M8 CuCrZr; Ø 0.8 (10x30)	10 Pcs.	140.0117	1031
91	Contact tip M8 CuCrZr; Ø 1.0 (10x30)	10 Pcs.	140.0316	1031
91	Contact tip M8 CuCrZr; Ø 1.2 (10x30)	10 Pcs.	140.0445	1031
91	Contact tip M8 E-Cu; Ø 0.8 for alu wire (10x30)	10 Pcs.	141.0003	1030
91	Contact tip M8 E-Cu; Ø 1.0 for alu wire (10x30)	10 Pcs.	141.0008	1030
91	Contact tip M8 E-Cu; Ø 1.2 for alu wire (10x30)	10 Pcs.	141.0015	1030
91	Contact tip M8 CuCrZr silver-plated; Ø 0.8 (10x30)	10 Pcs.	147.0117	1031
91	Contact tip M8 CuCrZr silver-plated; Ø 1.0 (10x30)	10 Pcs.	147.0316	1031
91	Contact tip M8 CuCrZr silver-plated; Ø 1.2 (10x30)	10 Pcs.	147.0445	1031
106	Gas nozzle; cylindrical; ND Ø 19.0	10 Pcs.	145.0045	1037
107	Gas nozzle; conical; ND Ø 16.0	10 Pcs.	145.0078	1037
108	Gas nozzle; tapered; ND Ø 12.0	10 Pcs.	145.0126	1037
120	Guide spiral liner blank; 2.0/4.5; for wire Ø 0.8 - 1.2; for 8.00 m		122.0040	1034
120	Guide spiral liner insulated; 2.0/4.5; for wire Ø 0.8 - 1.2; for 8.00 m		124.0169	1034
130	PTFE core liner 2.0/4.0; red; wire electrode Ø 0.8 - 1.2; for 8.00 m		126.0030	1034
130	PTFE carbon core liner 2.0/4.0; wire electrode Ø 0.8 - 1.2; for 8.00 m		127.0009	1034
130	Polyamid core liner 2.0/4.0; wire electrode Ø 0.8 - 1.2; for 8.00 m		128.0019	1034
131	Nipple for core liner at Ø 4.0	20 Pcs.	131.0001	1095
132	O-Ring 3.5x1.5	20 Pcs.	165.0008	9010
133	Guide tube for core liners up to Ø 4.0 (200 mm)	10 Pcs.	129.0461	1095
200	Spanner Standard		191.0001	9010

MIG/MAG Welding Torches Push-Pull Plus 240 D



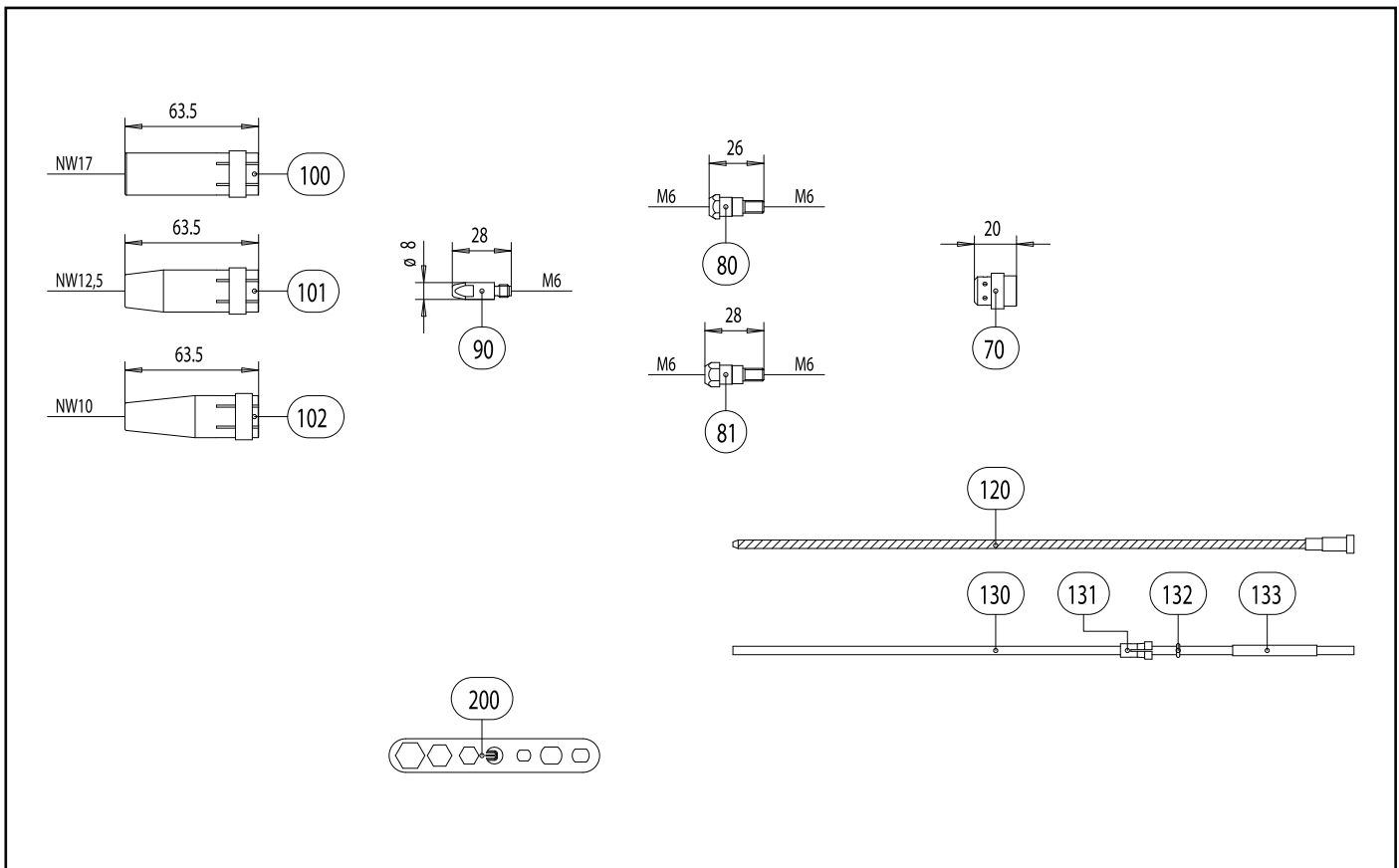
Pos.	Description	Units	Part-No.	Product-group
Torch				
	Push-Pull Plus 240 D; straight; 40 V motor; central adaptor WZ-2; 8.00 m		095.0110.1	1029
	Push-Pull Plus 240 D; 45° bent; 40 V motor; central adaptor WZ-2; 8.00 m		095.0111.1	1029
	Push-Pull Plus 240 D; straight; 40 V motor; poti 10 k-Ohm, central adaptor WZ-2; 8.00 m		095.0119.1	1029
	Push-Pull Plus 240 D; 45° bent; 40 V motor; poti 10 k-Ohm, central adaptor WZ-2; 8.00 m		095.0120.1	1029
Swan neck				
1	Swan neck Push-Pull Plus 240 D; straight		095.0040.1	1009
2	Swan neck Push-Pull Plus 240 D; 45° bent		095.0052.1	1009
3	Wear parts set gasket rings		095.0001	1095
Torch body, gear motor and equipment				
10	Torch adaptor cpl.		095.0032	1095
11	Pressure trigger cpl.		085.0018	1095
11.1	Pressure roll		085.0042	1095
11.2	Pressure button cpl.		085.0043	1095
12	Gear motor 24 V DC		085.0102.1	1095
12	Gear motor 40 V DC		085.0103.1	1095
13	Cover cpl.		095.0072.1	1095
16	Neckliner for wire Ø 0.8 - 1.0 mm (length=134 mm)	3 Pcs.	149.0264.3	1034
16	Neckliner for wire Ø 1.2 - 1.6 mm (length=134 mm)	3 Pcs.	149.0265.3	1034
17	Neckliner for wire Ø 0.8 - 1.0 mm (length=194 mm)	3 Pcs.	149.0266.3	1034
17	Neckliner for wire Ø 1.2 - 1.6 mm (length=194 mm)	3 Pcs.	149.0267.3	1034
19	Wire feed roll ST / AL 0.8 / 0.8 mm		095.0064.1	1095
19	Wire feed roll ST / AL 1.0 / 1.0 mm		095.0065.1	1095
19	Wire feed roll ST / AL 1.2 / 1.2 mm		095.0066.1	1095
20	Knurled screw M4	5 Pcs.	085.0113.5	1095

MIG/MAG Welding Torches Push-Pull Plus 240 D



Pos.	Description	Units	Part-No.	Product-group
Handle				
25	Handle cpl. incl. mounting screws and extension material		085.0017	1095
27	Trigger 2-pole		185.0100	1095
32	Sheet metal screw 2.9x6.5	20 Pcs.	079.0003	9010
33	Potentiometerhousing cpl.		085.0016	1095
!!!	IdentNr ¥187.0077¥ nicht gefunden...			
34	Potentiometer (2.0 k-Ohm)		187.0078	9010
34	Potentiometer (5.5 k-Ohm)		187.0076	9010
34	Potentiometer (10.0 k-Ohm)		187.0075	9010
34	Potentiometer (20.0 k-Ohm)		187.0079	9010
35	Potentiometer knob cpl.		085.0041	1095
Printed circuit board				
39	Printed circuit board for 42 V motor		080.0009	1095
Cable assembly				
40	Cable assembly cpl. 8.00 m with 7-pol. control leads without central adaptor GZ-2		095.0031	1095
41	Power cable Push Pull (PVC) for 8.00 m		115.0043	1012
42	Wire conduit cpl. for 8.00 m		156.0273	1012
43	Control lead cpl. 4-pole (0.4 m)		101.0054	1095
44	Control lead 7-pole; 0,34 qmm (100 m)	100 m	100.0034	4050
46	Plug	20 Pcs.	175.0004	9010
47	Hose 30 black Ø 4.9x1.5	100 m	109.0040	4050
48	Hose clamp Ø 8.2 mm with ring (mark 8.7)	100 Pcs.	173.0005	9010
49	Hose 47 blue Ø 5.5x1.5	100 m	109.0057	4050
49.1	Fastener cap blue	20 Pcs.	501.2424	1095
50	Hose 46 red Ø 5.5x1.5 cpl. with plug nipple ND 5; 0.6 m		103.0114	1095
50.1	Fastener cap red	20 Pcs.	501.2423	1095

MIG/MAG Welding Torches Push-Pull Plus 240 D

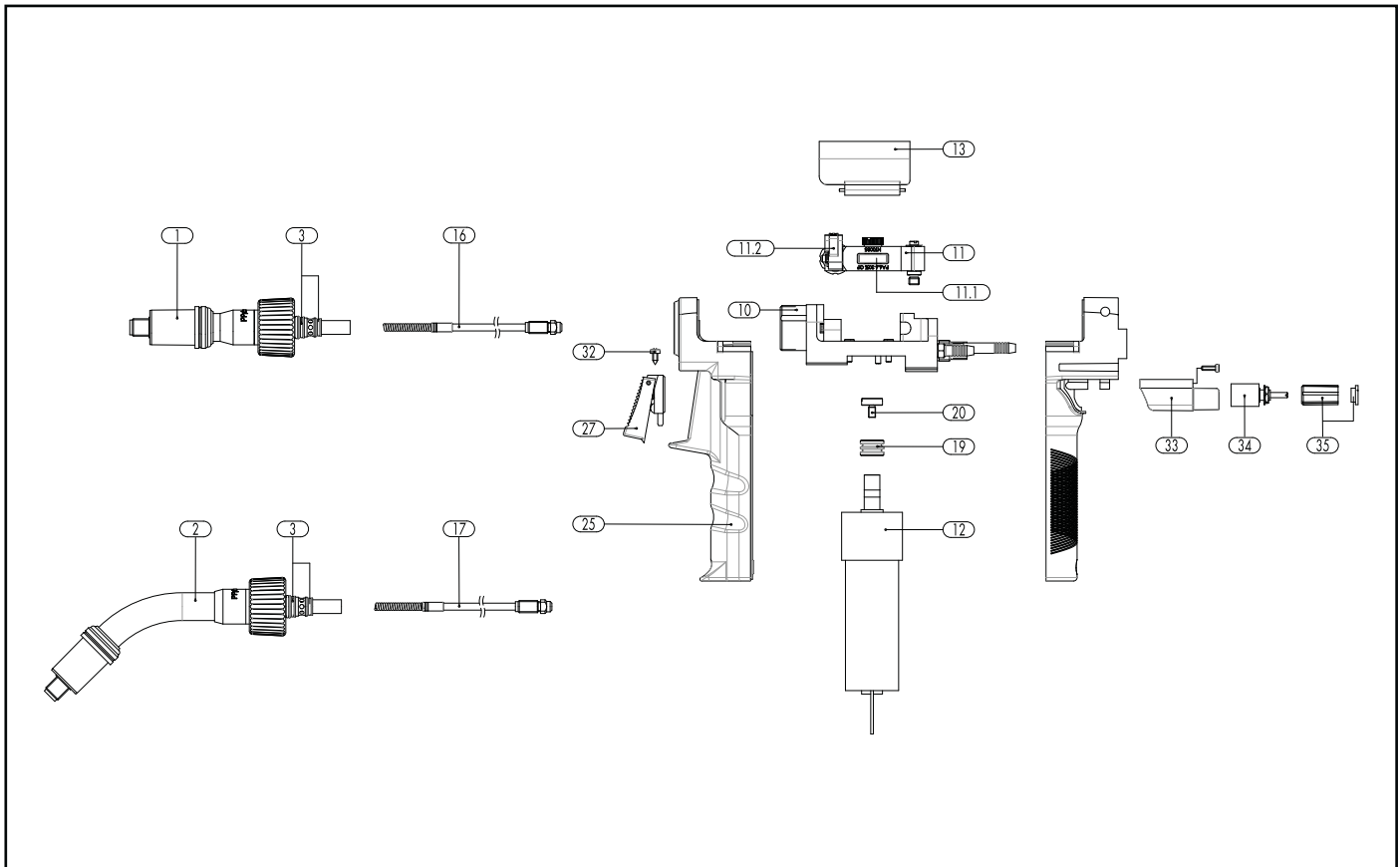


Pos.	Description	Units	Part-No.	Product-group
51	Fabrics hose 28x1.5 mm (40 m)	40 m	107.0091	4050
52	Cable support		400.1188	1095
53	Cable support fastening cpl.		400.1247	1095
54	Hose clamp Ø 9.0 mm with ring (mark 9.5)	100 Pcs.	173.0001	9010
55	Plug nipple ND 5 mm / Ø 6.0 mm	20 Pcs.	501.0114	9010
56	Cable support machine side big cpl. ND 31		500.0342	9010
56.1	Cable support spring big ND 31		500.0274	9010
57	Pan head screw M4x6	20 Pcs.	000.0552	9010
57.1	Screw cap 1	20 Pcs.	500.0251	9010
58	Hose clamp Ø 9.5 mm with ring (mark 10.0)	100 Pcs.	173.0002	9010
59	Adaptor nut M33x2		500.0213	9010
60	Central adaptor WZ-2		501.0015	9010
61	Coupling nut M10x1	10 Pcs.	501.0082	9010
62	O-Ring 4x1	20 Pcs.	165.0002	9010
	Wear parts			
70	Gas diffuser, white	10 Pcs.	012.0183	1032
70	Gas diffuser, silicone rubber	10 Pcs.	012.0243	1032
80	Contact tip holder M6; 26.0 mm	10 Pcs.	142.0003	1033
81	Contact tip holder M6; 28.0 mm	10 Pcs.	142.0010	1033
90	Contact tip M6 E-Cu; Ø 0.8 (8x28)	10 Pcs.	140.0051	1030
90	Contact tip M6 E-Cu; Ø 1.0 (8x28)	10 Pcs.	140.0242	1030
90	Contact tip M6 E-Cu; Ø 1.2 (8x28)	10 Pcs.	140.0379	1030
90	Contact tip M6 CuCrZr; Ø 0.8 (8x28)	10 Pcs.	140.0054	1031
90	Contact tip M6 CuCrZr; Ø 1.0 (8x28)	10 Pcs.	140.0245	1031
90	Contact tip M6 CuCrZr; Ø 1.2 (8x28)	10 Pcs.	140.0382	1031
90	Contact tip M6 E-Cu; Ø 0.8 for alu wire (8x28)	10 Pcs.	141.0001	1030

MIG/MAG Welding Torches Push-Pull Plus 240 D

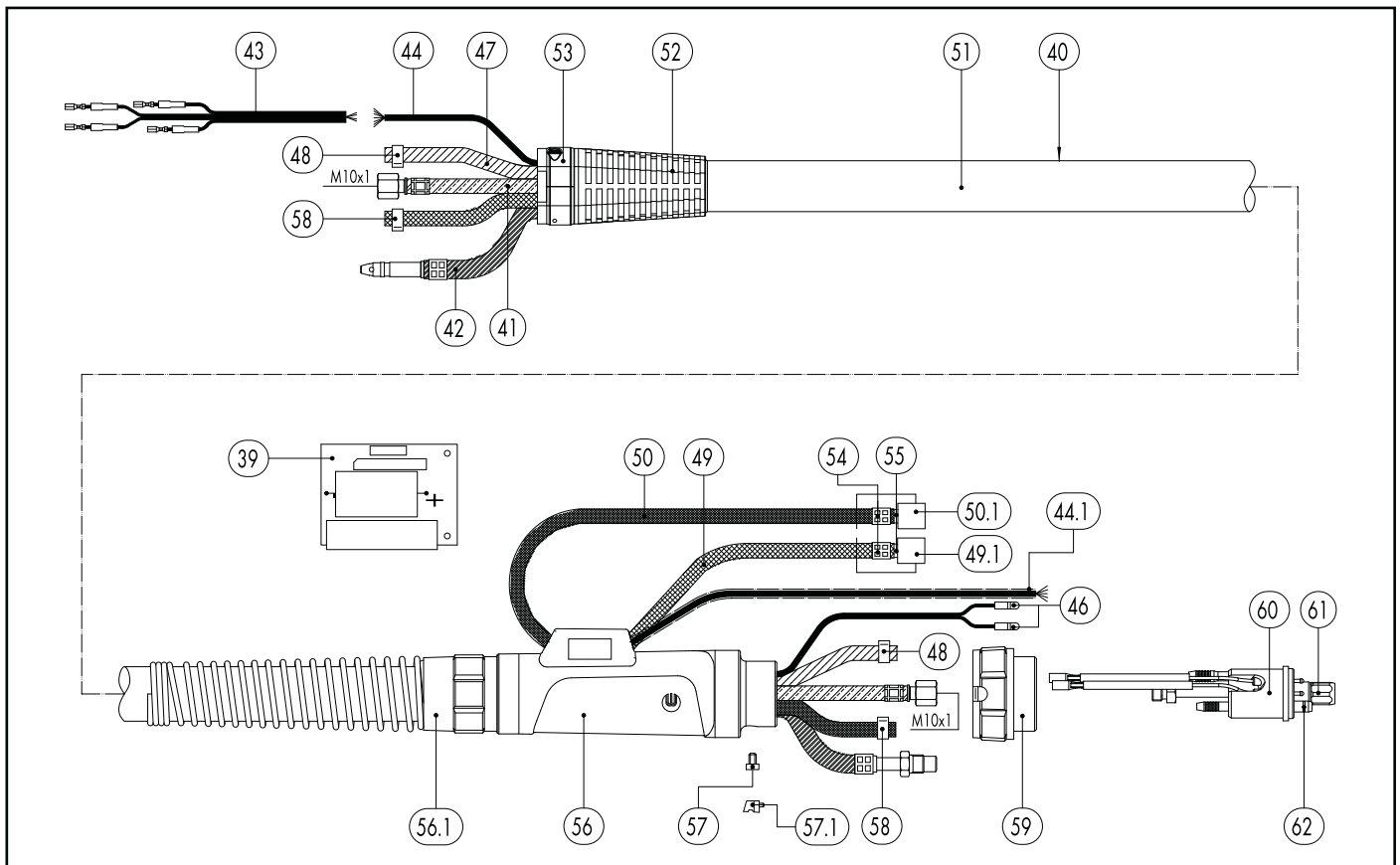
Pos.	Description	Units	Part-No.	Product-group
90	Contact tip M6 E-Cu; Ø 1.0 for alu wire (8x28)	10 Pcs.	141.0006	1030
90	Contact tip M6 E-Cu; Ø 1.2 for alu wire (8x28)	10 Pcs.	141.0010	1030
90	Contact tip M6 CuCrZr silver-plated; Ø 0.8 (8x28)	10 Pcs.	147.0054	1031
90	Contact tip M6 CuCrZr silver-plated; Ø 1.0 (8x28)	10 Pcs.	147.0245	1031
90	Contact tip M6 CuCrZr silver-plated; Ø 1.2 (8x28)	10 Pcs.	147.0382	1031
100	Gas nozzle; cylindrical; ND Ø 17.0	10 Pcs.	145.0047	1036
101	Gas nozzle; conical; ND Ø 12.5	10 Pcs.	145.0080	1036
102	Gas nozzle; tapered; ND Ø 10.0	10 Pcs.	145.0128	1036
120	Guide spiral liner blank; 2.0/4.5; for wire Ø 0.8 - 1.2; for 8.00 m		122.0040	1034
130	PTFE core liner 2.0/4.0; red; wire electrode Ø 0.8 - 1.2; for 8.00 m		126.0030	1034
130	PTFE carbon core liner 2.0/4.0; wire electrode Ø 0.8 - 1.2; for 8.00 m		127.0009	1034
130	Polyamid core liner 2.0/4.0; wire electrode Ø 0.8 - 1.2; for 8.00 m		128.0019	1034
131	Nipple for core liner at Ø 4.0	20 Pcs.	131.0001	1095
132	O-Ring 3.5x1.5	20 Pcs.	165.0008	9010
133	Guide tube for core liners up to Ø 4.0 (200 mm)	10 Pcs.	129.0461	1095
200	Spanner Standard		191.0001	9010

MIG/MAG Welding Torches Push-Pull Plus 401 D



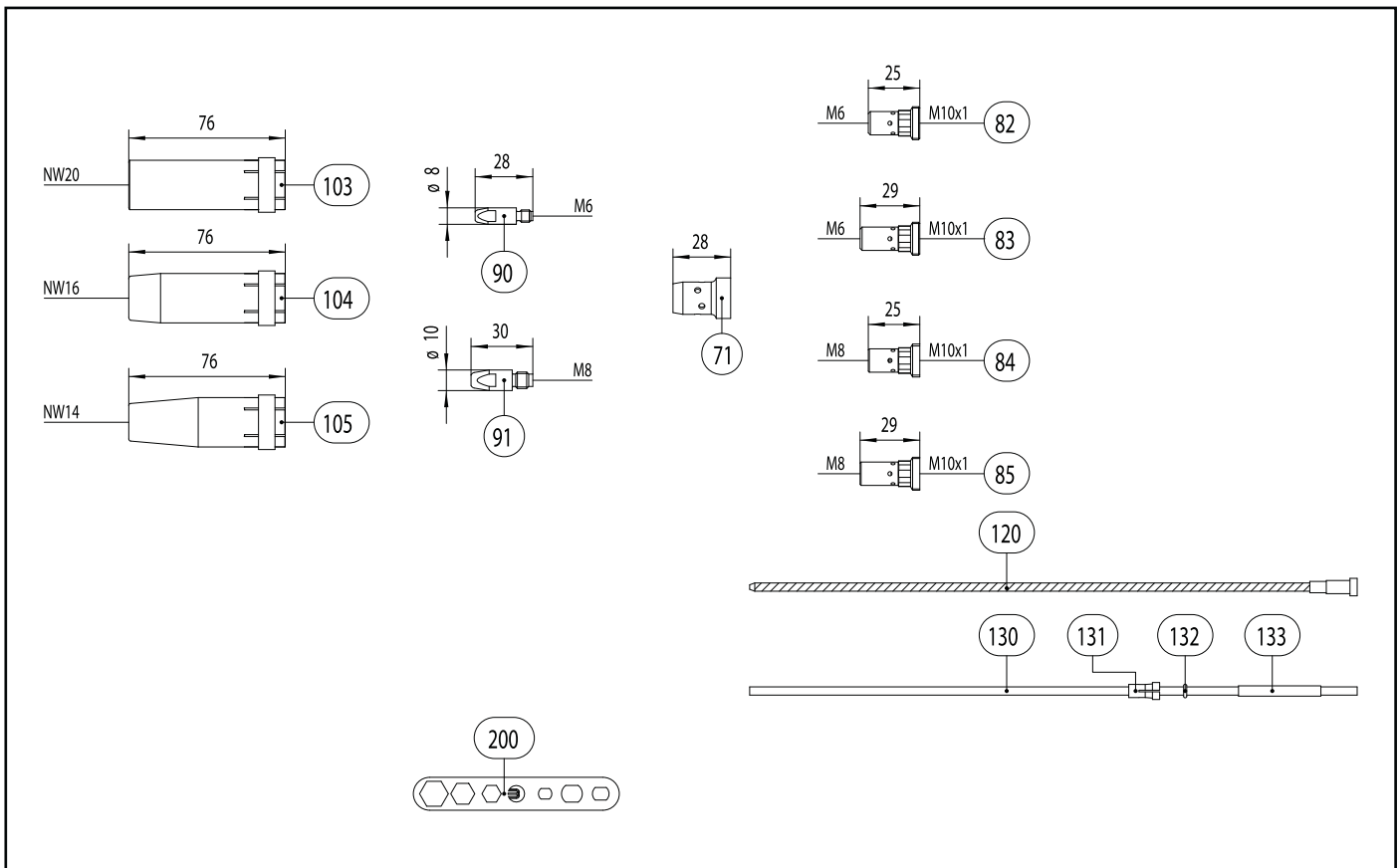
Pos.	Description	Units	Part-No.	Product-group
Torch				
	Push-Pull Plus 401 D; straight; 40 V motor; central adaptor WZ-2; 8.00 m		095.0100.1	1029
	Push-Pull Plus 401 D; 45° bent; 40 V motor; central adaptor WZ-2; 8.00 m		095.0101.1	1029
	Push-Pull Plus 401 D; straight; 40 V motor; poti 10 k-Ohm, central adaptor WZ-2; 8.00 m		095.0114.1	1029
	Push-Pull Plus 401 D; 45° bent; 40 V motor; poti 10 k-Ohm, central adaptor WZ-2; 8.00 m		095.0115.1	1029
Swan neck				
1	Swan neck PP Plus 401 D; straight		095.0002	1009
2	Swan neck PP Plus 401 D; 45° bent		095.0015	1009
3	Wear parts set gasket rings		095.0001	1095
Torch body, gear motor and equipment				
10	Torch adaptor cpl.		095.0032	1095
11	Pressure trigger cpl.		085.0018	1095
11.1	Pressure roll		085.0042	1095
11.2	Pressure button cpl.		085.0043	1095
12	Gear motor 24 V DC		085.0102.1	1095
12	Gear motor 40 V DC		085.0103.1	1095
13	Cover cpl.		095.0009	1095
16	Neckliner for wire Ø 0.8 - 1.0 mm (length=134 mm)	3 Pcs.	149.0264.3	1034
16	Neckliner for wire Ø 1.2 - 1.6 mm (length=134 mm)	3 Pcs.	149.0265.3	1034
17	Neckliner for wire Ø 0.8 - 1.0 mm (length=194 mm)	3 Pcs.	149.0266.3	1034
17	Neckliner for wire Ø 1.2 - 1.6 mm (length=194 mm)	3 Pcs.	149.0267.3	1034
19	Wire feed roll ST / AL 0.8 / 0.8 mm		095.0064.1	1095
19	Wire feed roll ST / AL 1.0 / 1.0 mm		095.0065.1	1095
19	Wire feed roll ST / AL 1.2 / 1.2 mm		095.0066.1	1095
19			095.0067.1	1095
20	Knurled screw M4	5 Pcs.	085.0113.5	1095

MIG/MAG Welding Torches Push-Pull Plus 401 D



Pos.	Description	Units	Part-No.	Product-group
Handle				
25	Handle cpl. incl. mounting screws and extension material		085.0017	1095
27	Trigger 2-pole		185.0100	1095
32	Sheet metal screw 2.9x6.5	20 Pcs.	079.0003	9010
33	Potentiometerhousing cpl.		085.0016	1095
!!!	IdentNr ¥187.0077¥ nicht gefunden...			
34	Potentiometer (2.0 k-Ohm)		187.0078	9010
34	Potentiometer (5.5 k-Ohm)		187.0076	9010
34	Potentiometer (10.0 k-Ohm)		187.0075	9010
34	Potentiometer (20.0 k-Ohm)		187.0079	9010
35	Potentiometer knob cpl.		085.0041	1095
Printed circuit board				
39	Printed circuit board for 42 V motor		080.0009	1095
Cable assembly				
40	Cable assembly cpl. 8.00 m with 7-pol. control leads without central adaptor GZ-2		095.0031	1095
41	Power cable Push Pull (PVC) for 8.00 m		115.0043	1012
42	Wire conduit cpl. for 8.00 m		156.0273	1012
43	Control lead cpl. 4-pole (0.4 m)		101.0054	1095
44	Control lead 7-pole; 0,34 qmm (100 m)	100 m	100.0034	4050
46	Plug	20 Pcs.	175.0004	9010
47	Hose 30 black Ø 4.9x1.5	100 m	109.0040	4050
48	Hose clamp Ø 8.2 mm with ring (mark 8.7)	100 Pcs.	173.0005	9010
49	Hose 47 blue Ø 5.5x1.5	100 m	109.0057	4050
49.1	Fastener cap blue	20 Pcs.	501.2424	1095
50	Hose 46 red Ø 5.5x1.5 cpl. with plug nipple ND 5; 0.6 m		103.0114	1095
50.1	Fastener cap red	20 Pcs.	501.2423	1095

MIG/MAG Welding Torches Push-Pull Plus 401 D



Pos.	Description	Units	Part-No.	Product-group
51	Fabrics hose 28x1.5 mm (40 m)	40 m	107.0091	4050
52	Cable support		400.1188	1095
53	Cable support fastening cpl.		400.1247	1095
54	Hose clamp Ø 9.0 mm with ring (mark 9.5)	100 Pcs.	173.0001	9010
55	Plug nipple ND 5 mm / Ø 6.0 mm	20 Pcs.	501.0114	9010
56	Cable support machine side big cpl. ND 31		500.0342	9010
56.1	Cable support spring big ND 31		500.0274	9010
57	Pan head screw M4x6	20 Pcs.	000.0552	9010
57.1	Screw cap 1	20 Pcs.	500.0251	9010
58	Hose clamp Ø 9.5 mm with ring (mark 10.0)	100 Pcs.	173.0002	9010
59	Adaptor nut M33x2		500.0213	9010
60	Central adaptor WZ-2		501.0015	9010
61	Coupling nut M10x1	10 Pcs.	501.0082	9010
62	O-Ring 4x1	20 Pcs.	165.0002	9010
	Wear parts			
71	Gas diffuser, white	10 Pcs.	030.0145	1032
71	Gas diffuser, long life	10 Pcs.	030.0037	1032
71	Gas diffuser, ceramic	10 Pcs.	030.0190	1032
82	Contact tip holder M6; 25.0 mm (short)	10 Pcs.	142.0008	1033
83	Contact tip holder M6; 29.0 mm (long)	10 Pcs.	142.0013	1033
84	Contact tip holder M8; 25.0 mm (short)	10 Pcs.	142.0022	1033
	Contact tip holder M8; 27.0 mm; CuCrZr	10 Pcs.	142.0201.10	1033
85	Contact tip holder M8; 29.0 mm (long)	10 Pcs.	142.0027	1033
90	Contact tip M6 E-Cu; Ø 0.8 (8x28)	10 Pcs.	140.0051	1030
90	Contact tip M6 E-Cu; Ø 1.0 (8x28)	10 Pcs.	140.0242	1030
90	Contact tip M6 E-Cu; Ø 1.2 (8x28)	10 Pcs.	140.0379	1030

MIG/MAG Welding Torches Push-Pull Plus 401 D

Pos.	Description	Units	Part-No.	Product-group
90	Contact tip M6 E-Cu; Ø 1.4 (8x28)	10 Pcs.	140.0516	1030
90	Contact tip M6 E-Cu; Ø 1.6 (8x28)	10 Pcs.	140.0555	1030
90	Contact tip M6 CuCrZr; Ø 0.8 (8x28)	10 Pcs.	140.0054	1031
90	Contact tip M6 CuCrZr; Ø 1.0 (8x28)	10 Pcs.	140.0245	1031
90	Contact tip M6 CuCrZr; Ø 1.2 (8x28)	10 Pcs.	140.0382	1031
90	Contact tip M6 CuCrZr; Ø 1.4 (8x28)	10 Pcs.	140.0519	1031
90	Contact tip M6 CuCrZr; Ø 1.6 (8x28)	10 Pcs.	140.0558	1031
90	Contact tip M6 E-Cu; Ø 0.8 for alu wire (8x28)	10 Pcs.	141.0001	1030
90	Contact tip M6 E-Cu; Ø 1.0 for alu wire (8x28)	10 Pcs.	141.0006	1030
90	Contact tip M6 E-Cu; Ø 1.2 for alu wire (8x28)	10 Pcs.	141.0010	1030
90	Contact tip M6 E-Cu; Ø 1.6 for alu wire (8x28)	10 Pcs.	141.0020	1030
90	Contact tip M6 CuCrZr silver-plated; Ø 0.8 (8x28)	10 Pcs.	147.0054	1031
90	Contact tip M6 CuCrZr silver-plated; Ø 1.0 (8x28)	10 Pcs.	147.0245	1031
90	Contact tip M6 CuCrZr silver-plated; Ø 1.2 (8x28)	10 Pcs.	147.0382	1031
91	Contact tip M8 E-Cu; Ø 0.8 (10x30)	10 Pcs.	140.0114	1030
91	Contact tip M8 E-Cu; Ø 1.0 (10x30)	10 Pcs.	140.0313	1030
91	Contact tip M8 E-Cu; Ø 1.2 (10x30)	10 Pcs.	140.0442	1030
91	Contact tip M8 E-Cu; Ø 1.4 (10x30)	10 Pcs.	140.0533	1030
91	Contact tip M8 E-Cu; Ø 1.6 (10x30)	10 Pcs.	140.0587	1030
91	Contact tip M8 CuCrZr; Ø 0.8 (10x30)	10 Pcs.	140.0117	1031
91	Contact tip M8 CuCrZr; Ø 1.0 (10x30)	10 Pcs.	140.0316	1031
91	Contact tip M8 CuCrZr; Ø 1.2 (10x30)	10 Pcs.	140.0445	1031
91	Contact tip M8 CuCrZr; Ø 1.4 (10x30)	10 Pcs.	140.0536	1031
91	Contact tip M8 CuCrZr; Ø 1.6 (10x30)	10 Pcs.	140.0590	1031
91	Contact tip M8 E-Cu; Ø 0.8 for alu wire (10x30)	10 Pcs.	141.0003	1030
91	Contact tip M8 E-Cu; Ø 1.0 for alu wire (10x30)	10 Pcs.	141.0008	1030
91	Contact tip M8 E-Cu; Ø 1.2 for alu wire (10x30)	10 Pcs.	141.0015	1030
91	Contact tip M8 E-Cu; Ø 1.6 for alu wire (10x30)	10 Pcs.	141.0022	1030
91	Contact tip M8 CuCrZr silver-plated; Ø 0.8 (10x30)	10 Pcs.	147.0117	1031
91	Contact tip M8 CuCrZr silver-plated; Ø 1.0 (10x30)	10 Pcs.	147.0316	1031
91	Contact tip M8 CuCrZr silver-plated; Ø 1.2 (10x30)	10 Pcs.	147.0445	1031
91	Contact tip M8 CuCrZr silver-plated; Ø 1.4 (10x30)	10 Pcs.	147.0536	1031
91	Contact tip M8 CuCrZr silver-plated; Ø 1.6 (10x30)	10 Pcs.	147.0590	1031
103	Gas nozzle; cylindrical; ND Ø 20.0	10 Pcs.	145.0051	1037
104	Gas nozzle; conical; ND Ø 16.0	10 Pcs.	145.0085	1037
105	Gas nozzle; tapered; ND Ø 14.0	10 Pcs.	145.0132	1037
120	Guide spiral liner blank; 2.0/4.5; for wire Ø 0.8 - 1.2; for 8.00 m		122.0040	1034
120	Guide spiral liner blank; 2.5/4.5; for wire Ø 1.4 - 1.6; for 8.00 m		122.0065	1034
130	PTFE core liner 2.0/4.0; red; wire electrode Ø 0.8 - 1.2; for 8.00 m		126.0030	1034
130	PTFE core liner 2.7/4.7; yellow; wire electrode Ø 1.4 - 1.6; for 8.00 m		126.0047	1034
130	PTFE carbon core liner 2.0/4.0; wire electrode Ø 0.8 - 1.2; for 8.00 m		127.0009	1034
130	PTFE carbon core liner 2.7/4.7; wire electrode Ø 1.4 - 1.6; for 8.00 m		127.0014	1034
130	Polyamid core liner 2.0/4.0; wire electrode Ø 0.8 - 1.2; for 8.00 m		128.0019	1034
130	Polyamid core liner 2.3/4.7; wire electrode Ø 1.4 - 1.6; for 8.00 m		128.0023	1034
131	Nipple for core liner at Ø 4.0	20 Pcs.	131.0001	1095
131	Nipple for core liner at Ø 4.7	20 Pcs.	131.0002	1095
132	O-Ring 3.5x1.5	20 Pcs.	165.0008	9010
133	Guide tube for core liners up to Ø 4.0 (200 mm)	10 Pcs.	129.0461	1095
200	Spanner Standard		191.0001	9010