

# MIG/MAG welding torches "ABIMIG® W T"

## Liquid cooled • rating 350 A up to 600 A

Welding torches in the ABIMIG® W T series convince through higher load limits than traditional torches of the same size, because the cooling concept that was redesigned by ABICOR BINZEL protects wearing parts even better against overheating with high power consumption as well.

A spatter protector integrated in the gas nozzles makes them particularly resistant and can be replaced separately where required. In addition, the torch necks and the gas nozzle are nickel-plated, in order to reduce spatter adhesions to a minimum.

Thanks to the rotatable and exchangeable torch necks in various lengths and geometries welders can adjust the ABIMIG® W T torch exactly to their needs.

- Long-life screw-in gas nozzles with integrated, exchangeable spatter protection
- A single basic torch for three capacities - reduces storage and maintenance costs
- Quick change, freely positionable torch necks - increase working comfort and reduce servicing costs
- Torch necks available in many different lengths and bending angles - for best accessibility
- Extended and short triggers available - for best handling
- Tried-and-tested ergonomic grip - easy to hold in all positions



#### Note for liquid cooled torches:

To protect cable assembly components from excessive heat build up we recommend a post welding cooling cycle of at least four minutes.

#### ABIMIG® W T 340

##### Technical data (EN 60 974-7):

Rating: 400 A CO<sub>2</sub>  
350 A mixed gas M21  
(DIN EN ISO 14175)  
350 A pulse  
Duty cycle: 100%  
Wire size: 0.8-1.2 mm

#### ABIMIG® W T 440

##### Technical data (EN 60 974-7):

Rating: 500 A CO<sub>2</sub>  
450 A mixed gas M21  
(DIN EN ISO 14175)  
350 A pulse  
Duty cycle: 100%  
Wire size: 0.8-1.6 mm

#### ABIMIG® W T 540

##### Technical data (EN 60 974-7):

Rating: 600 A CO<sub>2</sub>  
550 A mixed gas M21  
(DIN EN ISO 14175)  
400 A pulse  
Duty cycle: 100%  
Wire size: 1.0-1.6 mm

Torch complete Type	Handle	Part-No.			Swan neck	
		3 m	4 m	5 m	Type	Part-No.
ABIMIG® W T 340	Push-button short	788.0041.1	788.0042.1	788.0043.1	50°	788.0020.1
ABIMIG® W T 340	Push-button long	788.0116.1	788.0117.1	788.0118.1	50°	788.0020.1
ABIMIG® W T 440	Push-button short	788.0044.1	788.0045.1	788.0046.1	50°	788.0005.1
ABIMIG® W T 440	Push-button long	788.0119.1	788.0120.1	788.0121.1	50°	788.0005.1
ABIMIG® W T 540	Push-button short	788.0047.1	788.0048.1	788.0049.1	50°	788.0026.1
ABIMIG® W T 540	Push-button long	788.0122.1	788.0123.1	788.0124.1	50°	788.0026.1

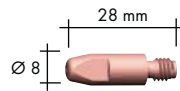
# ABIMIG® W T 340, ABIMIG® W T 440, ABIMIG® W T 540

## Wear parts

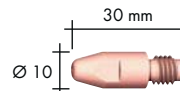


## Gas nozzle incl. spatter protection<sup>1</sup> (5 pcs.)

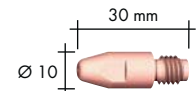
	Ø 17	145.0740.5	Ø 18	145.0745.5	Ø 20	145.0742.5
Cylindrical	Ø 12.5	145.0737.5 <sup>2</sup>	Ø 14.5	145.D092.5 <sup>3</sup>	Ø 16	145.0735.5 <sup>4</sup>
Conical	Ø 10	145.0739.5	Ø 12	145.0746.5	Ø 14	145.0741.5



**M6**



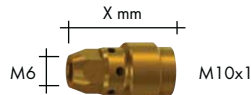
**M8**



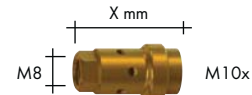
**M8**

## Contact tip (10 pcs.)

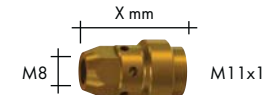
	Ø 0.8	140.0051	Ø 1.0	140.0114	Ø 1.2	140.0313	Ø 1.6	140.0379	140.0442	140.0442	140.0587	140.0587
E-Cu	Ø 0.8	141.0001	Ø 1.0	141.0033	Ø 1.2	141.0008	Ø 1.6	-	141.0015	141.0015	141.0022	141.0022
E-Cu for Al	Ø 0.8	140.0054	Ø 1.0	140.0117	Ø 1.2	140.0316	Ø 1.6	140.0245 <sup>2</sup>	140.0445 <sup>3</sup>	140.0445 <sup>4</sup>	140.0590	140.0590
CuCrZr	Ø 0.8	-	Ø 1.0	-	Ø 1.2	-	Ø 1.6	-	-	-	-	-



**M6**



**M8**



**M8**

## Contact tip holder (5 pcs.)

	24.0	142.0241.5	26.0	142.0252.5	25.0	142.0239.5
Brass	26.0	142.0242.5 <sup>2</sup>	28.0	142.0253.5 <sup>3</sup>	27.0	142.0240.5 <sup>4</sup>
	-	-	31.0	142.0243.5	-	-
CuCrZr	26.0	142.0274.5	29.5	142.0262.5	25.0	142.0247.5
	-	-	-	-	27.0	142.0248.5
	-	-	-	-	28.5	142.0261.5

## Torch neck spiral

	Ø 0.8-1.2	123.D097 <sup>2</sup>	Ø 1.4-1.6	123.D097 <sup>3</sup>	Ø 0.8-1.2	123.D097 <sup>4</sup>	Ø 1.4-1.6	123.D098	149.0418.1	149.0418.1	149.0418.1
Spiral	Ø 0.8-1.2	-	Ø 1.4-1.6	123.D098	Ø 0.8-1.2	149.0418.1	Ø 1.4-1.6	149.0420.1	149.0418.1	149.0418.1	149.0420.1
BPL liner with inlet-tip	Ø 0.8-1.2	149.0418.1	Ø 1.4-1.6	149.0420.1	Ø 0.8-1.2	149.0418.1	Ø 1.4-1.6	149.0420.1	149.0418.1	149.0418.1	149.0420.1

Liner		for 3 m	for 4 m	for 5 m
Spiral	Ø 0.8	124.0137	124.0138	124.0139
	Ø 1.0	124.0111 <sup>2</sup>	124.0112 <sup>2</sup>	124.0113 <sup>2</sup>
	Ø 1.2	124.0111 <sup>3,4</sup>	124.0112 <sup>3,4</sup>	124.0113 <sup>3,4</sup>
	Ø 1.6	124.0114	124.0115	124.0116
PTFE liner	Ø 0.8	126.0005	126.0008	126.0011
	Ø 1.0	126.0021	126.0026	126.0028
	Ø 1.2	126.0021	126.0026	126.0028
	Ø 1.6	126.0039	126.0042	126.0045
Carbon PTFE liner	Ø 0.8	127.0002	127.0003	127.0004
	Ø 1.0	127.0005	127.0007	127.0008
	Ø 1.2	127.0005	127.0007	127.0008
	Ø 1.6	127.0010	127.0012	127.0013



<sup>1</sup> The integrated spatter protection is already contained in the above-mentioned gas nozzles and can be ordered separately on request.

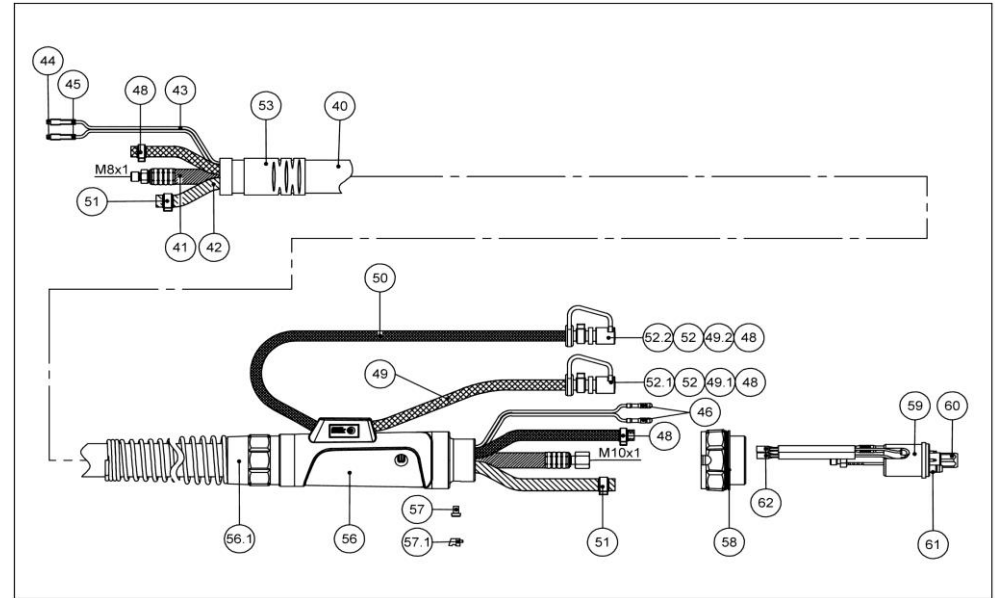
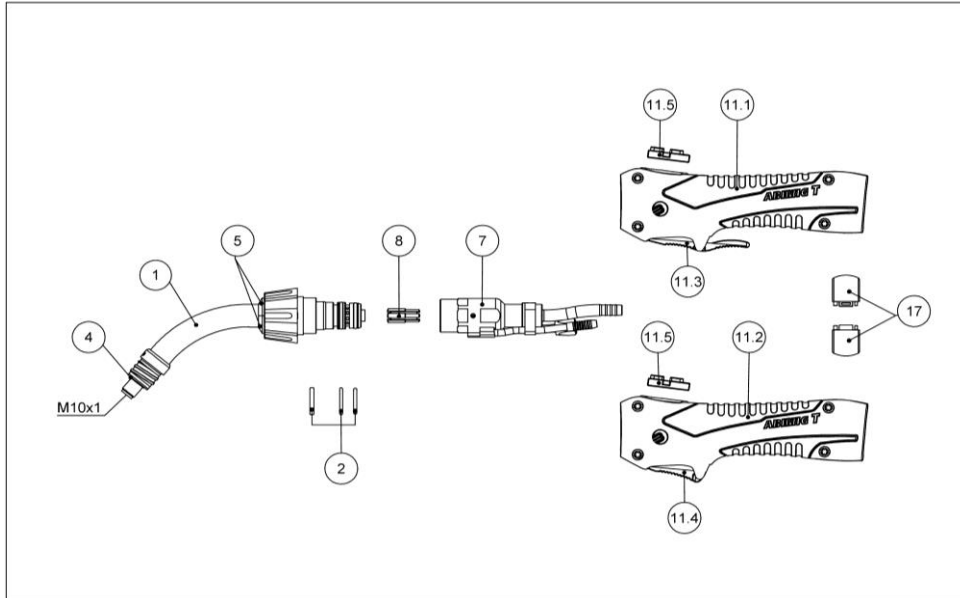
<sup>2</sup> Included in the standard equipment for complete torches ABIMIG® W T 340.

<sup>3</sup> Included in the standard equipment for complete torches ABIMIG® W T 340.

<sup>4</sup> Included in the standard equipment for complete torches ABIMIG® W T 340.

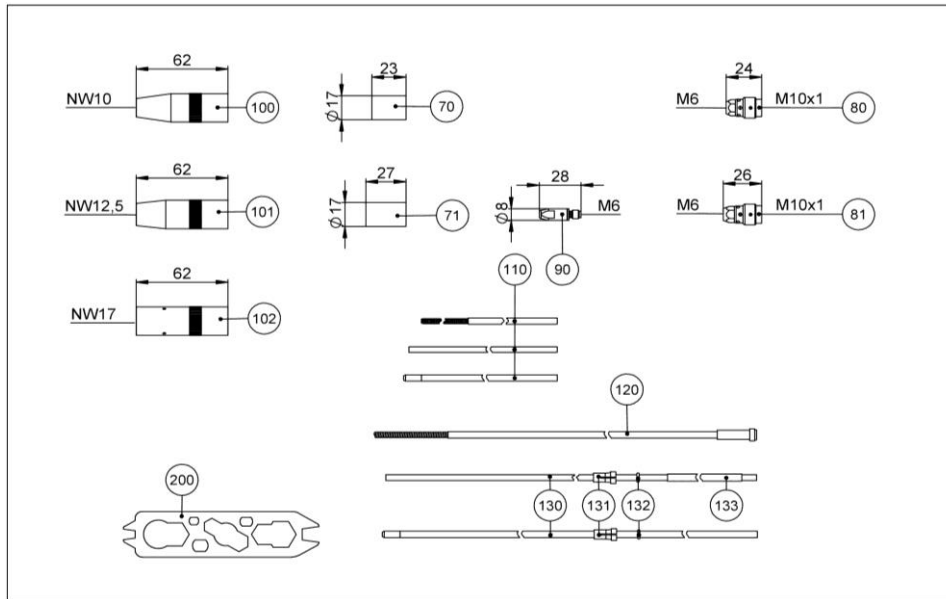
Part list ABIMIG® WT / WTG 340

788.E0041.GB



Pos.	Description	Spec.	Part No.
<b>Basic torch (complete)</b>			
	ABIMIG® WT 340 PVC; central plug WZ-2; 3.0m; 50° X140 Y85 ST1.0 TK		788.0041.1
	ABIMIG® WT 340 PVC; central plug WZ-2; 4.0m; 50° X140 Y85 ST1.0 TK		788.0042.1
	ABIMIG® WT 340 PVC; central plug WZ-2; 5.0m; 50° X140 Y85 ST1.0 TK		788.0043.1
	ABIMIG® WT 340 PVC; central plug WZ-2; 3.0m; 50° X140 Y85 ST1.0 TL		788.0116.1
	ABIMIG® WT 340 PVC; central plug WZ-2; 4.0m; 50° X140 Y85 ST1.0 TL		788.0117.1
	ABIMIG® WT 340 PVC; central plug WZ-2; 5.0m; 50° X140 Y85 ST1.0 TL		788.0118.1
<b>Combi torch (Torch without neck and consumables)</b>			
	ABIMIG® WTG PVC; central plug WZ-2; 3.0m TK		788.0035.1
	ABIMIG® WTG PVC; central plug WZ-2; 4.0m TK		788.0036.1
	ABIMIG® WTG PVC; central plug WZ-2; 5.0m TK		788.0037.1
	ABIMIG® WTG PVC; central plug WZ-2; 3.0m TL		788.0110.1
	ABIMIG® WTG PVC; central plug WZ-2; 4.0m TL		788.0111.1
	ABIMIG® WTG PVC; central plug WZ-2; 5.0m TL		788.0112.1
<b>Torch neck</b>			
1	Torch neck ABIMIG® WT 340; 50° X140 Y85		788.0020.1
no pic.	Torch neck ABIMIG® WT 340K; 50° X125 Y75		788.0057.1
2	O-ring set 14x2/15x2/16x2 per pieces 5		165.0142.1
4	Insulating disc	10 pcs	023.0122
5	Protection cap (two-piece) D=16 for cap nut	10 pcs	014.H282.10
7	Torch body M23x1.5		033.D167.1
8	Insulating bush		033.D182.1
<b>Handle</b>			
11.1	Handle ABIMIG® WT cpl. with long trigger and blind cover		180.0164.1
11.2	Handle ABIMIG® WT cpl. with short trigger and blind cover		180.0165.1
11.3	Trigger long 2-pole		185.D118.1
11.4	Trigger short 2-pole		185.0135.1
11.5	Blind cover		400.D573.1
17	Half ring D=37	2 pcs	400.D561.2

Pos.	Description	Spec.	Part No.
<b>Cable assembly</b>			
40	Cable assembly ABIMIG® WT; PVC	for 3.0 m 033.0356.1	for 4.0 m 033.0357.1
41	Power cable PVC	115.0581	115.0582
42	Wire conduit yellow 6.5x1.75 with hose clips	109.0094.1	109.0095.1
53	Outer cover Ø 25x1.5 with cable support	107.0079	107.0044
no pic.	Hose yellow 6.5x1.75		200 m 109.D012.0
43	Control lead 2-pole		200 m 100.0019
44	Cable eye		20 pcs 175.0022
45	Insulating sleeve for cable eye		20 pcs 400.0119
46	Plug		20 pcs 175.0004
48	Hose clip D= 9.0 with insert ring code 9.5		100 pcs 173.0001
49	Hose 47 blue 5.6x1.5		100 m 109.0057
49.1	Code colour ring blue		20 pcs 501.2167
49.2	Code colour ring red		20 pcs 501.2166
50	Coolant return hose 0.60m cpl. (incl. pos. 49.2; pos. 52; pos. 52.2)		103.0116.1
no pic.	Hose 46 red 5.6x1.5		100 m 109.0056
51	Hose clip D= 11.8 with insert ring code 12.3		100 pcs 501.0012
52	Plug-in nipple		20 pcs 501.0114
52.1	Sealing cover blue		20 pcs 501.2424
52.2	Sealing cover red		20 pcs 501.2423
56	Connection housing cpl. large (incl. pos. 56.1 und pos. 58)		500.0544.1
56.1	Cable support spring Ø 29 incl. Biclip		501.2236
57	Cylindrical screw M4x6		20 pcs 000.0552
57.1	Cover 1		20 pcs 500.0251
58	Connecting nut M33x2		500.0213
59	Central connector WZ-2 M10x1		501.D743.1
60	Cap nut M10x1, plastic		5 pcs 501.D536.5
61	O-Ring 4x1		20 pcs 165.0002
62	Sleeve		20 pcs 175.0003



Pos.	Description	Spec.	Part No.
<b>Consumables</b>			
70	Spatter protector for gas nozzle DN10	10 pcs	146.0082.10
71	Spatter protector for gas nozzle DN12.5 and DN17	10 pcs	146.0081.10
80	Tip holder M10x1 / M6 24.0mm brass; contact tip recess 3mm	5 pcs	142.0241.5
81	Tip holder M10x1 / M6 26.0mm brass; contact tip recess 1mm	5 pcs	142.0242.5
90	Contact tip M6 E-Cu; Ø 0.8 (8x28)	10 pcs	140.0051
90	Contact tip M6 E-Cu; Ø 1.0 (8x28)	10 pcs	140.0242
90	Contact tip M6 E-Cu; Ø 1.2 (8x28)	10 pcs	140.0379
90	Contact tip M6 CuCrZr; Ø 0.8 (8x28)	10 pcs	140.0054
90	Contact tip M6 CuCrZr; Ø 1.0 (8x28)	10 pcs	140.0245
90	Contact tip M6 CuCrZr; Ø 1.2 (8x28)	10 pcs	140.0382
90	Contact tip M6 E-Cu; Ø 0.8 for Al wire (8x28)	10 pcs	141.0001
90	Contact tip M6 E-Cu; Ø 1.0 for Al wire (8x28)	10 pcs	141.0006
90	Contact tip M6 E-Cu; Ø 1.2 for Al wire (8x28)	10 pcs	141.0010
90	Contact tip M6 CuCrZr silver plated; Ø 0.8 (8x28)	10 pcs	147.0054
90	Contact tip M6 CuCrZr silver plated; Ø 1.0 (8x28)	10 pcs	147.0245
90	Contact tip M6 CuCrZr silver plated; Ø 1.2 (8x28)	10 pcs	147.0382
100	Gas nozzle T18; DN 10 galvanized; conical L=62mm cpl.	5 pcs	145.0739.5
101	Gas nozzle T18; DN 12.5 galvanized; conical L=62mm cpl.	5 pcs	145.0737.5
102	Gas nozzle T18; DN 17 galvanized; cylindrical L=62mm cpl.	5 pcs	145.0740.5

Pos.	Description	Spec.	Part No.
110	Neck liner 2.0/4.4; pink; for wire Ø 0.8 - 1.2; L=280mm		123.D097
110	Neck liner 2.0/4.4; pink; for wire Ø 0.8 - 1.2; L=420mm		123.D124
110	Neck liner 2.0/4.4; pink; for wire Ø 0.8 - 1.2; L=720mm		123.D125
110	Neck liner 1.8/4.4 brass for wire Ø 0.8 - 1.0; L=280mm		120.D145
110	Neck liner 1.8/4.4 brass for wire Ø 0.8 - 1.0; L=720mm		120.0080.1
110	Neck liner 2.2/4.4 brass for wire Ø 1.2 - 1.4; L=280mm		120.D146
110	Neck liner 2.2/4.4 brass for wire Ø 1.2 - 1.4; L=720mm		120.0081.1
110	Neck liner PTFE 1.5/4.0; blue; for wire Ø 0.8 - 1.0; L=280mm		126.D001
110	Neck liner PTFE 1.5/4.0; blue; for wire Ø 0.8 - 1.0; L=720mm		126.0083.1
110	Neck liner PTFE 2.0/4.0; red; for wire Ø 1.0 - 1.2; L=280mm		126.D002
110	Neck liner PTFE 2.0/4.0; red; for wire Ø 1.0 - 1.2; L=720mm		126.0084.1
110	Neck liner BPLorange 2.0x4.7; for wire Ø 0.8 - 1.2; L=280mm		149.0418.1
110	Neck liner BPLorange 2.0x4.7; for wire Ø 0.8 - 1.2; L=720mm		149.0419.1
<b>Torch liner insulated</b>		<b>for 3.0 m</b>	<b>for 4.0 m</b>
120	Torch liner insulated; 1.5/4.5; blue; wire Ø 0.8 - 1.0	124.0137	124.0138
120	Torch liner insulated; 2.0/4.5; red; wire Ø 1.0 - 1.2	124.0111	124.0112
130	PTFE liner 1.5/4.0; blue; wire Ø 0.8 - 1.0	126.0005	126.0008
130	PTFE liner 2.0/4.0; red; wire Ø 1.0 - 1.2	126.0021	126.0026
130	Carbon PTFE liner 1.5/4.0; wire Ø 0.8 - 1.0	127.0002	127.0003
130	Carbon PTFE liner 2.0/4.0; wire Ø 1.0 - 1.2	127.0005	127.0007
130	Liner BPLorange 2.0x4.7; wire Ø 0.8 - 1.2	126.0069	126.0070
131	Nipple for PTFE liner with outer diameter 4.0	20 pcs	131.0001
131	Nipple for PTFE liner with outer diameter 4.7	20 pcs	131.0002
132	O-Ring 3.5x1.5	20 pcs	165.0008
133	Guiding tube for PTFE liner up to outer diameter 4.0 (L=200 mm)	10 pcs	129.0461
200	Spanner for ABIMIG®		191.D045
no pic.	Castellated spanner for mounting insulating bush pos. 8		191.0178.1
no pic.	Sealing grease silicone-free	10g tin	192.0078
no pic.	Sealing plug cpl. for pos. 7		191.0176.1
• Standard equipment			

**KURT HAUFE**

Schweißtechnik GmbH & Co KG  
ein Unternehmen der ABICOR Gruppe

D-01159 Dresden, Altlibtau 9  
Telefon: 0351/4203-30  
Telefax: 0351/4203-340  
e-mail: haufe@binzel-abicor.com  
internet: www.binzel-abicor.com

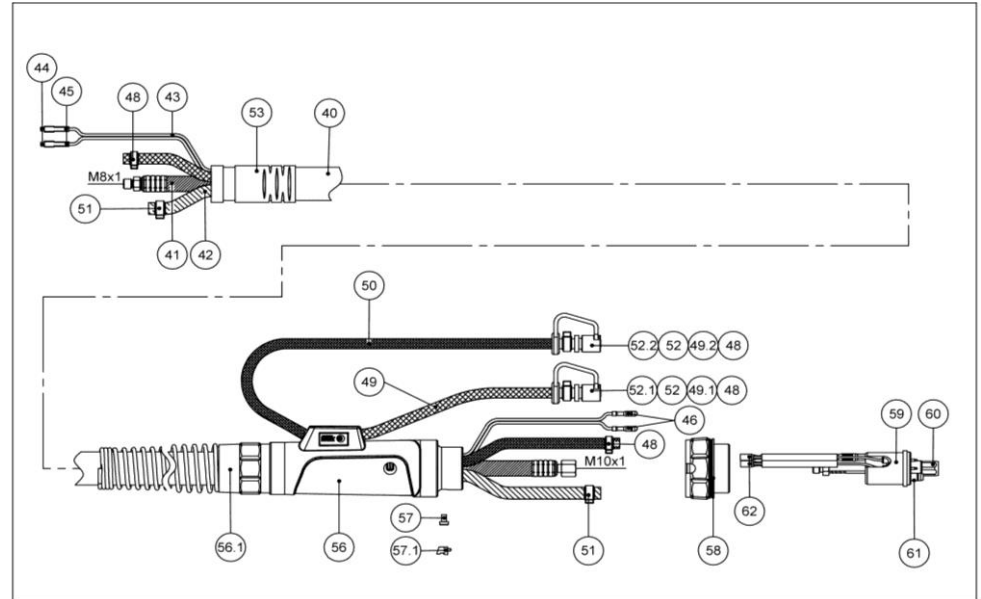
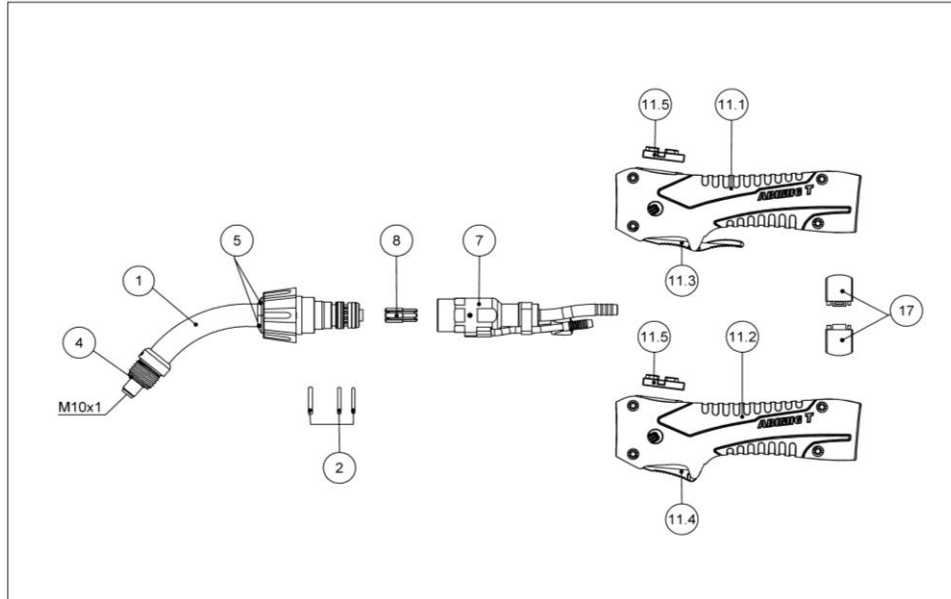


www.binzel-abicor.com



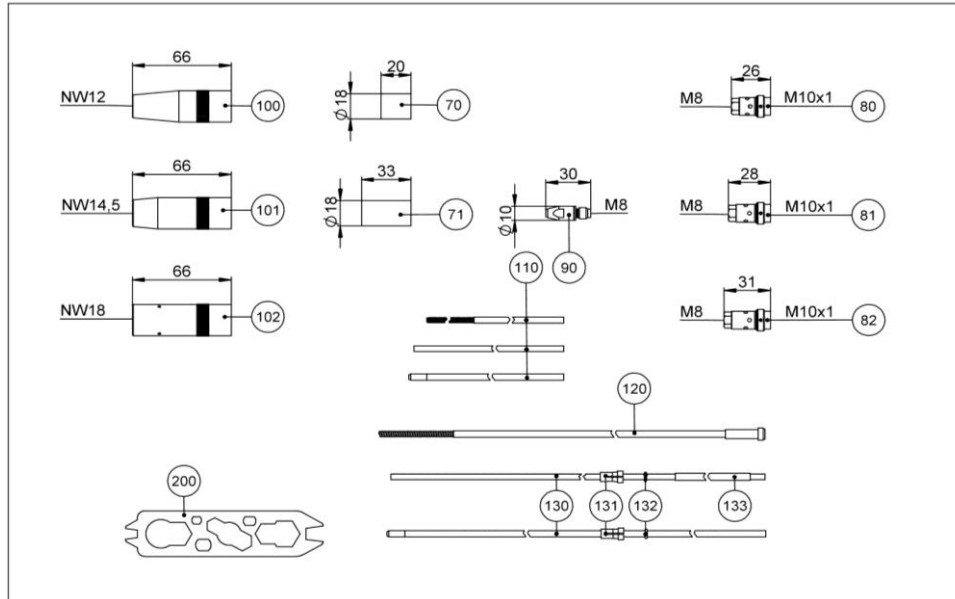
Part list ABIMIG® WT / WTG 440

788.E0044.GB



Pos.	Description	Spec.	Part No.
<b>Basic torch (complete)</b>			
	ABIMIG® WT 440 PVC; central plug WZ-2; 3.0m; 50° X145 Y85 ST1.2 TK		788.0044.1
	ABIMIG® WT 440 PVC; central plug WZ-2; 4.0m; 50° X145 Y85 ST1.2 TK		788.0045.1
	ABIMIG® WT 440 PVC; central plug WZ-2; 5.0m; 50° X145 Y85 ST1.2 TK		788.0046.1
	ABIMIG® WT 440 PVC; central plug WZ-2; 3.0m; 50° X145 Y85 ST1.2 TL		788.0119.1
	ABIMIG® WT 440 PVC; central plug WZ-2; 4.0m; 50° X145 Y85 ST1.2 TL		788.0120.1
	ABIMIG® WT 440 PVC; central plug WZ-2; 5.0m; 50° X145 Y85 ST1.2 TL		788.0121.1
<b>Combi torch (Torch without neck and consumables)</b>			
	ABIMIG® WTG PVC; central plug WZ-2; 3.0m TK		788.0035.1
	ABIMIG® WTG PVC; central plug WZ-2; 4.0m TK		788.0036.1
	ABIMIG® WTG PVC; central plug WZ-2; 5.0m TK		788.0037.1
	ABIMIG® WTG PVC; central plug WZ-2; 3.0m TL		788.0110.1
	ABIMIG® WTG PVC; central plug WZ-2; 4.0m TL		788.0111.1
	ABIMIG® WTG PVC; central plug WZ-2; 5.0m TL		788.0112.1
<b>Torch neck</b>			
1	Torch neck ABIMIG® WT 440; 50° X145 Y85		788.0005.1
no pic.	Torch neck ABIMIG® WT 440K; 50° X125 Y80		788.0059.1
no pic.	Torch neck ABIMIG® WT 440L; 50° X185 Y85		788.0068.1
no pic.	Torch neck ABIMIG® WT 440L; 60° X165 Y105		788.0074.1
no pic.	Torch neck ABIMIG® WT 440XL; 50° X350 Y85		788.0076.1
2	O-ring set 14x2/15x2/16x2 per pieces 5		165.0142.1
4	Insulating disc	10 pcs	023.0122
5	Protection cap (two-piece) D=16 for cap nut	10 pcs	014.H282.10
7	Torch body M23x1.5		033.D167.1
8	Insulating bush		033.D182.1
<b>Handle</b>			
11.1	Handle ABIMIG® WT cpl. with long trigger and blind cover		180.0164.1
11.2	Handle ABIMIG® WT cpl. with short trigger and blind cover		180.0165.1

Pos.	Description	Spec.	Part No.
11.3	Trigger long 2-pole		185.D118.1
11.4	Trigger short 2-pole		185.0135.1
11.5	Blind cover		400.D573.1
17	Half ring D=37	2 pcs	400.D561.2
<b>Cable assembly</b>			
40	Cable assembly ABIMIG® WT; PVC	for 3.0m 033.0356.1 for 4.0m 033.0357.1 for 5.0m 033.0358.1	
41	Power cable PVC	115.0581	115.0582
42	Wire conduit yellow 6.5x1.75 with hose clips	109.0094.1	109.0095.1
53	Outer cover Ø 25x1.5 with cable support	107.0079	107.0044
no pic.	Hose yellow 6.5x1.75		200 m 109.D012.0
43	Control lead 2-pole		200 m 100.0019
44	Cable eye		20 pcs 175.0022
45	Insulating sleeve for cable eye		20 pcs 400.0119
46	Plug		20 pcs 175.0004
48	Hose clip D= 9.0 with insert ring code 9.5		100 pcs 173.0001
49	Hose 47 blue 5.6x1.5		100 m 109.0057
49.1	Code colour ring blue		20 pcs 501.2167
49.2	Code colour ring red		20 pcs 501.2166
50	Coolant return hose 0.60m cpl. (incl. pos. 49.2; pos. 52; pos. 52.2)		103.0116.1
no pic.	Hose 46 red 5.6x1.5		100 m 109.0056
51	Hose clip D= 11.8 with insert ring code 12.3		100 pcs 173.0012
52	Plug-in nipple		20 pcs 501.0114
52.1	Sealing cover blue		20 pcs 501.2424
52.2	Sealing cover red		20 pcs 501.2423
56	Connection housing cpl. large (incl. pos. 56.1 und pos. 58)		500.0544.1
56.1	Cable support spring Ø 29 incl. Biclip		501.2236
57	Cylindrical screw M4x6		20 pcs 000.0552
57.1	Cover 1		20 pcs 500.0251
58	Connecting nut M33x2		500.0213



Pos.	Description	Spec.	Part No.
59	Central connector WZ-2 M10x1		501.D743.1
60	Cap nut M10x1, plastic	5 pcs	501.D536.5
61	O-Ring 4x1	20 pcs	165.0002
62	Sleeve	20 pcs	175.0003
<b>Consumables</b>			
70	Spatter protector for gas nozzle DN12	10 pcs	146.0083.10
71	Spatter protector for gas nozzle DN14.5 and DN18	10 pcs	146.D003.10
80	Tip holder M10x1 / M8 26.0mm brass; contact tip recess 5mm	5 pcs	142.0252.5
81	Tip holder M10x1 / M8 28.0mm brass; contact tip recess 3mm	5 pcs	142.0253.5
82	Tip holder M10x1 / M8 31.0mm brass; contact tip recess 0mm	5 pcs	142.0243.5
90	Contact tip M8 E-Cu; Ø 0.8 (10x30)	10 pcs	140.0114
90	Contact tip M8 E-Cu; Ø 1.0 (10x30)	10 pcs	140.0313
90	Contact tip M8 E-Cu; Ø 1.2 (10x30)	10 pcs	140.0442
90	Contact tip M8 E-Cu; Ø 1.4 (10x30)	10 pcs	140.0533
90	Contact tip M8 E-Cu; Ø 1.6 (10x30)	10 pcs	140.0587
90	Contact tip M8 CuCrZr; Ø 0.8 (10x30)	10 pcs	140.0117
90	Contact tip M8 CuCrZr; Ø 1.0 (10x30)	10 pcs	140.0316
90	Contact tip M8 CuCrZr; Ø 1.2 (10x30)	10 pcs	140.0445
90	Contact tip M8 CuCrZr; Ø 1.4 (10x30)	10 pcs	140.0536
90	Contact tip M8 CuCrZr; Ø 1.6 (10x30)	10 pcs	140.0590
90	Contact tip M8 E-Cu; Ø 0.8 for Al wire (10x30)	10 pcs	141.0003
90	Contact tip M8 E-Cu; Ø 1.0 for Al wire (10x30)	10 pcs	141.0008
90	Contact tip M8 E-Cu; Ø 1.2 for Al wire (10x30)	10 pcs	141.0015
90	Contact tip M8 E-Cu; Ø 1.4 for Al wire (10x30)	10 pcs	141.0055
90	Contact tip M8 E-Cu; Ø 1.6 for Al wire (10x30)	10 pcs	141.0022
90	Contact tip M8 CuCrZr silver plated; Ø 0.8 (10x30)	10 pcs	147.0117
90	Contact tip M8 CuCrZr silver plated; Ø 1.0 (10x30)	10 pcs	147.0316
90	Contact tip M8 CuCrZr silver plated; Ø 1.2 (10x30)	10 pcs	147.0445
90	Contact tip M8 CuCrZr silver plated; Ø 1.4 (10x30)	10 pcs	147.0536
90	Contact tip M8 CuCrZr silver plated; Ø 1.6 (10x30)	10 pcs	147.0590

Pos.	Description	Spec.	Part No.
100	Gas nozzle M20; DN 12 galvanized; conical L=66mm cpl.	5 pcs	145.0746.5
101	Gas nozzle M20; DN 14.5 galvanized; conical L=66mm cpl.	5 pcs	145.D092.5
102	Gas nozzle M20; DN 18 galvanized; cylindrical L=66mm cpl.	5 pcs	145.0745.5
110	Neck liner 2.0/4.4; pink; for wire Ø 1.0 - 1.2; L=280mm		123.D097
110	Neck liner 2.0/4.4; pink; for wire Ø 1.0 - 1.2; L=420mm		123.D124
110	Neck liner 2.0/4.4; pink; for wire Ø 1.0 - 1.2; L=720mm		123.D125
110	Neck liner 2.4/4.5; blue; for wire Ø 1.4 - 1.6; L=280mm		123.D098
110	Neck liner 2.4/4.5; blue; for wire Ø 1.4 - 1.6; L=720mm		123.0032.1
110	Neck liner 1.8/4.4 brass for wire Ø 0.8 - 1.0; L=280mm		120.D145
110	Neck liner 1.8/4.4 brass for wire Ø 0.8 - 1.0; L=720mm		120.0080.1
110	Neck liner 2.2/4.4 brass for wire Ø 1.2 - 1.4; L=280mm		120.D146
110	Neck liner 2.2/4.4 brass for wire Ø 1.2 - 1.4; L=720mm		120.0081.1
110	Neck liner PTFE 1.5/4.0; blue; for wire Ø 0.8 - 1.0; L=280mm		126.D001
110	Neck liner PTFE 1.5/4.0; blue; for wire Ø 0.8 - 1.0; L=720mm		126.0083.1
110	Neck liner PTFE 2.0/4.0; red; for wire Ø 1.0 - 1.2; L=280mm		126.D002
110	Neck liner PTFE 2.0/4.0; red; for wire Ø 1.0 - 1.2; L=720mm		126.0084.1
110	Neck liner PTFE 2.7/4.7; yellow; for wire Ø 1.4 - 1.6; L=280mm		126.D003
110	Neck liner PTFE 2.7/4.7; yellow; for wire Ø 1.4 - 1.6; L=720mm		126.0085.1
110	Neck liner BPLorange 2.0/4.7; for wire Ø 0.8 - 1.2; L=280mm		149.0418.1
110	Neck liner BPLorange 2.0/4.7; for wire Ø 0.8 - 1.2; L=720mm		149.0419.1
110	Neck liner BPLpetrol 2.7/4.7; for wire Ø 1.4 - 1.6; L=280mm		149.0420.1
110	Neck liner BPLpetrol 2.7/4.7; for wire Ø 1.4 - 1.6; L=720mm		149.0421.1

Pos.	Description	Torch liner		
		for 3.0m	for 4.0m	for 5.0m
120	Torch liner insulated; 1.5/4.5; blue; wire Ø 0.8 - 1.0	124.0137	124.0138	124.0139
120	Torch liner insulated; 2.0/4.5; red; wire Ø 1.0 - 1.2	124.0111	124.0112	124.0113
130	Torch liner insulated; 2.5/4.5; yellow; wire Ø 1.4 - 1.6	124.0114	124.0115	124.0116
130	PTFE liner 1.5/4.0; blue; wire Ø 0.8 - 1.0	126.0005	126.0008	126.0011
130	PTFE liner 2.0/4.0; red; wire Ø 1.0 - 1.2	126.0021	126.0026	126.0028
130	PTFE liner 2.7/4.7; yellow; wire Ø 1.4 - 1.6	126.0039	126.0042	126.0045
130	Carbon PTFE liner 1.5/4.0; wire Ø 0.8 - 1.0	127.0002	127.0003	127.0004
130	Carbon PTFE liner 2.0/4.0; wire Ø 1.0 - 1.2	127.0005	127.0007	127.0008
130	Carbon PTFE liner 2.7/4.7; wire Ø 1.4 - 1.6	127.0010	127.0012	127.0013
130	Liner BPLorange 2.0/4.7; wire Ø 0.8 - 1.2	126.0069	126.0070	126.0071
130	Liner BPLpetrol 2.7/4.7; wire Ø 1.4 - 1.6	126.0072	126.0073	126.0074
131	Nipple for PTFE liner with outer diameter 4.0		20 pcs	131.0001
131	Nipple for PTFE liner with outer diameter 4.7		20 pcs	131.0002
132	O-Ring 3.5x1.5		20 pcs	165.0008
133	Guiding tube for PTFE liner up to outer diameter 4.0mm (L=200 mm)		10 pcs	129.0461
200	Spanner for ABIMIG®			191.D045
no pic.	Castellated spanner for mounting insulating bush pos. 8			191.0178.1
no pic.	Sealing grease silicone-free		10g tin	192.0078
no pic.	Sealing plug cpl. for pos. 7			191.0176.1

• Standard equipment

**KURT HAUFE**  
Schweißtechnik GmbH & Co KG  
ein Unternehmen der ABICOR Gruppe

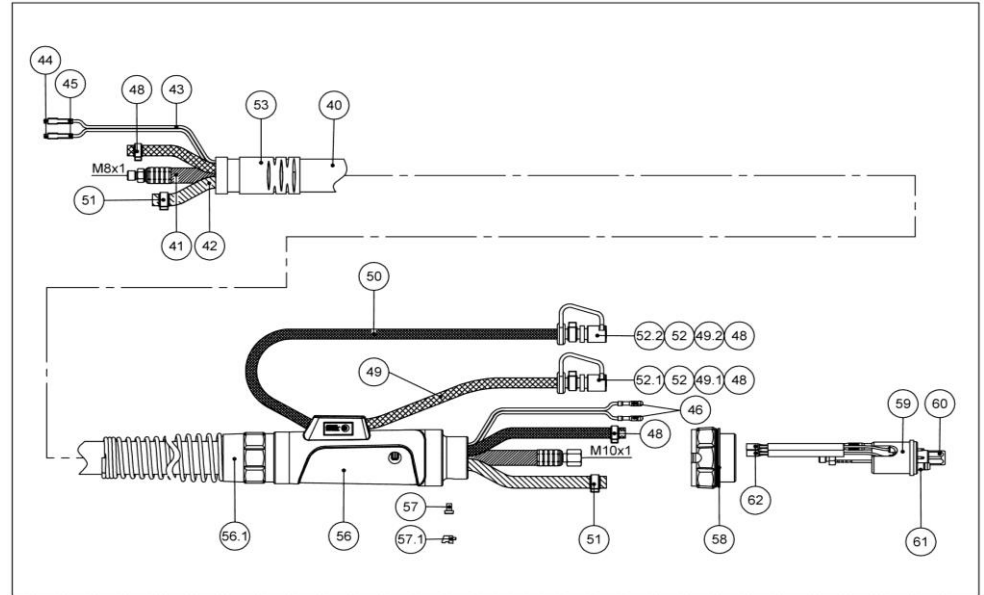
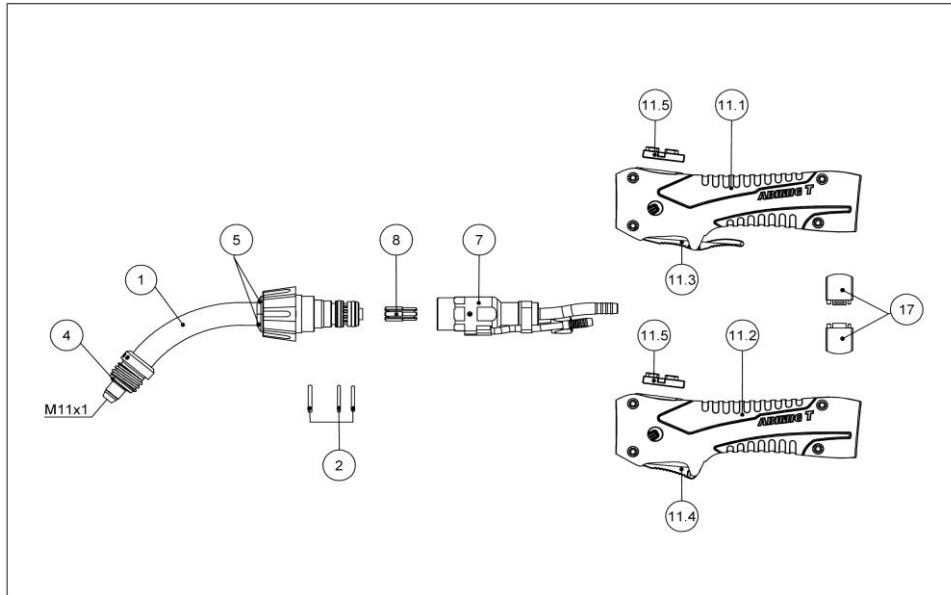
D-01159 Dresden, Alltätbau 9  
Telefon: 0351/4203-30  
Telefax: 0351/4203-340  
e-mail: haufe@binzel-abicor.com  
internet: www.binzel-abicor.com

**ABICOR  
BINZEL**  
www.binzel-abicor.com

**IBG  
GROUP**

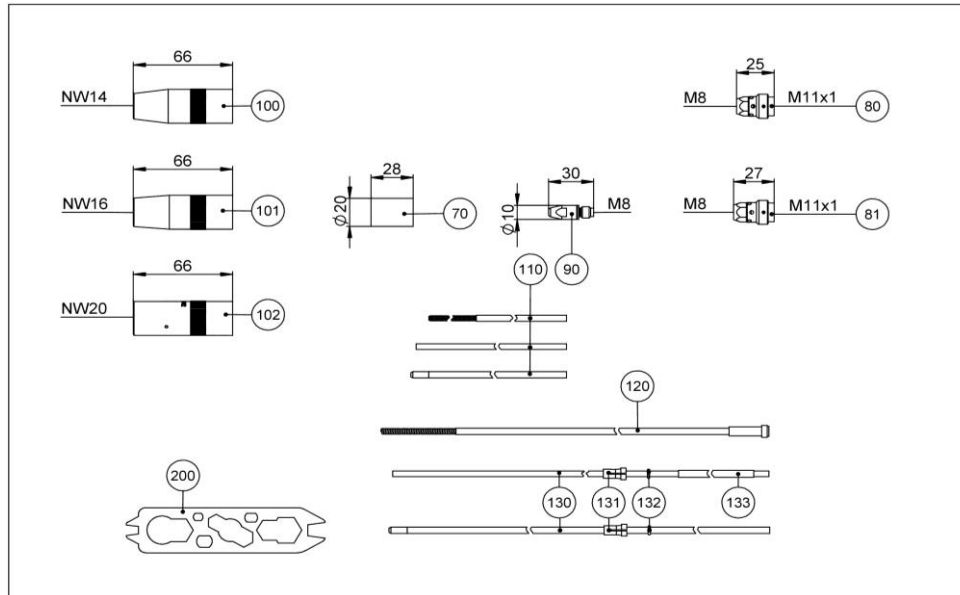
Part list ABIMIG® WT / WTG 540

788.E0047.GB



Pos.	Description	Spec.	Part No.
<b>Basic torch (complete)</b>			
	ABIMIG® WT 540 PVC; central plug WZ-2; 3.0m; 50° X150 Y90 ST1.2 TK		788.0047.1
	ABIMIG® WT 540 PVC; central plug WZ-2; 4.0m; 50° X150 Y90 ST1.2 TK		788.0048.1
	ABIMIG® WT 540 PVC; central plug WZ-2; 5.0m; 50° X150 Y90 ST1.2 TK		788.0049.1
	ABIMIG® WT 540 PVC; central plug WZ-2; 3.0m; 50° X150 Y90 ST1.2 TL		788.0122.1
	ABIMIG® WT 540 PVC; central plug WZ-2; 4.0m; 50° X150 Y90 ST1.2 TL		788.0123.1
	ABIMIG® WT 540 PVC; central plug WZ-2; 5.0m; 50° X150 Y90 ST1.2 TL		788.0124.1
<b>Combi torch (Torch without neck and consumables)</b>			
	ABIMIG® WTG PVC; central plug WZ-2; 3.0m TK		788.0035.1
	ABIMIG® WTG PVC; central plug WZ-2; 4.0m TK		788.0036.1
	ABIMIG® WTG PVC; central plug WZ-2; 5.0m TK		788.0037.1
	ABIMIG® WTG PVC; central plug WZ-2; 3.0m TL		788.0110.1
	ABIMIG® WTG PVC; central plug WZ-2; 4.0m TL		788.0111.1
	ABIMIG® WTG PVC; central plug WZ-2; 5.0m TL		788.0112.1
<b>Torch neck</b>			
1	Torch neck ABIMIG® WT 540; 50° X145 Y85		788.0026.1
no pic.	Torch neck ABIMIG® WT 540K; 50° X140 Y85		788.0082.1
no pic.	Torch neck ABIMIG® WT 540L; 50° X200 Y90		788.0088.1
no pic.	Torch neck ABIMIG® WT 540L; 60° X190 Y105		788.0090.1
no pic.	<b>Torch neck ABIMIG® WT 540XL; 50° X360 Y90</b>		<b>788.0096.1</b>
	Torch neck ABIMIG® WT 540XXL; 50° X495 Y90		788.0102.1
2	O-ring set 14x2/15x2/16x2 per pieces 5		165.0142.1
4	Insulating disc	10 pcs	023.0122
5	Protection cap (two-piece) D=16 for cap nut	10 pcs	014.H282.10
7	Torch body M23x1.5		033.D167.1
8	Insulating bush		033.D182.1
<b>Handle</b>			
11.1	Handle ABIMIG® WT cpl. with long trigger and blind cover		180.0164.1
11.2	Handle ABIMIG® WT cpl. with short trigger and blind cover		180.0165.1

Pos.	Description	Spec.	Part No.
11.3	Trigger long 2-pole		185.D118.1
11.4	Trigger short 2-pole		185.0135.1
11.5	Blind cover		400.D573.1
17	Half ring D=37	2 pcs	400.D561.2
<b>Cable assembly</b>			
40	Cable assembly ABIMIG® WT; PVC	for 3.0m 033.0356.1 for 4.0m 033.0357.1 for 5.0m 033.0358.1	
41	Power cable PVC	115.0581	115.0582
42	Wire conduit yellow 6.5x1.75 with hose clips	109.0094.1	109.0095.1
53	Outer cover Ø 25x1.5 with cable support	107.0079	107.0044
no pic.	Hose yellow 6.5x1.75		200 m 109.D012.0
43	Control lead 2-pole		200 m 100.0019
44	Cable eye		20 pcs 175.0022
45	Insulating sleeve for cable eye		20 pcs 400.0119
46	Plug		20 pcs 175.0004
48	Hose clip D= 9.0 with insert ring code 9.5		100 pcs 173.0001
49	Hose 47 blue 5.6x1.5		100 m 109.0057
49.1	Code colour ring blue		20 pcs 501.2167
49.2	Code colour ring red		20 pcs 501.2166
50	Coolant return hose 0.60m cpl. (incl. pos. 49.2; pos. 52; pos. 52.2)		103.0116.1
no pic.	Hose 46 red 5.6x1.5		100 m 109.0056
51	Hose clip D= 11.8 with insert ring code 12.3		100 pcs 173.0012
52	Plug-in nipple		20 pcs 501.0114
52.1	Sealing cover blue		20 pcs 501.2424
52.2	Sealing cover red		20 pcs 501.2423
56	Connection housing cpl. large (incl. pos. 56.1 und pos. 58)		500.0544.1
56.1	Cable support spring Ø 29 incl. Biclip		501.2236
57	Cylindrical screw M4x6		20 pcs 000.0552
57.1	Cover 1		20 pcs 500.0251
58	Connecting nut M33x2		500.0213



Pos.	Description	Spec.	Part No.
59	Central connector WZ-2 M10x1		501.D743.1
60	Cap nut M10x1, plastic	5 pcs	501.D536.5
61	O-Ring 4x1	20 pcs	165.0002
62	Sleeve	20 pcs	175.0003
<b>Consumables</b>			
70	Spatter protector for gas nozzle DN14, DN16 and DN20	10 pcs	146.0080.10
80	Tip holder M11x1 / M8 25.0mm Ms; contact tip recess 6mm	5 pcs	142.0239.5
80	Tip holder M11x1 / M8 25.0mm CuCrZr; contact tip recess 6mm	5 pcs	142.0247.5
81	Tip holder M11x1 / M8 27.0mm Ms; contact tip recess 4mm	5 pcs	142.0240.5
81	Tip holder M11x1 / M8 27.0mm CuCrZr; contact tip recess 4mm	5 pcs	142.0248.5
90	Contact tip M8 E-Cu; Ø 1.0 (10x30)	10 pcs	140.0313
90	Contact tip M8 E-Cu; Ø 1.2 (10x30)	10 pcs	140.0442
90	Contact tip M8 E-Cu; Ø 1.4 (10x30)	10 pcs	140.0533
90	Contact tip M8 E-Cu; Ø 1.6 (10x30)	10 pcs	140.0587
90	Contact tip M8 CuCrZr; Ø 1.0 (10x30)	10 pcs	140.0316
90	Contact tip M8 CuCrZr; Ø 1.2 (10x30)	10 pcs	140.0445
90	Contact tip M8 CuCrZr; Ø 1.4 (10x30)	10 pcs	140.0536
90	Contact tip M8 CuCrZr; Ø 1.6 (10x30)	10 pcs	140.0590
90	Contact tip M8 E-Cu; Ø 1.0 for Al wire (10x30)	10 pcs	141.0008
90	Contact tip M8 E-Cu; Ø 1.2 for Al wire (10x30)	10 pcs	141.0015
90	Contact tip M8 E-Cu; Ø 1.4 for Al wire (10x30)	10 pcs	141.0055
90	Contact tip M8 E-Cu; Ø 1.6 for Al wire (10x30)	10 pcs	141.0022
90	Contact tip M8 CuCrZr silver plated; Ø 1.0 (10x30)	10 pcs	147.0316
90	Contact tip M8 CuCrZr silver plated; Ø 1.2 (10x30)	10 pcs	147.0445
90	Contact tip M8 CuCrZr silver plated; Ø 1.4 (10x30)	10 pcs	147.0536
90	Contact tip M8 CuCrZr silver plated; Ø 1.6 (10x30)	10 pcs	147.0590

Pos.	Description	Spec.	Part No.
100	Gas nozzle R22x1/8; DN 14 galvanized; conical L=66mm cpl.	5 pcs	145.0741.5
101	Gas nozzle R22x1/8; DN 16 galvanized; conical L=66mm cpl.	5 pcs	145.0735.5
102	Gas nozzle R22x1/8; DN 20 galvanized; cylindrical L=66mm cpl.	5 pcs	145.0742.5
110	Neck liner 2.0/4.4; pink; for wire Ø 1.0 - 1.2; L=280mm		123.D097
110	Neck liner 2.0/4.4; pink; for wire Ø 1.0 - 1.2; L=420mm		123.D124
110	Neck liner 2.0/4.4; pink; for wire Ø 1.0 - 1.2; L=720mm		123.D125
110	Neck liner 2.4/4.5; blue; for wire Ø 1.4 - 1.6; L=280mm		123.D098
110	Neck liner 2.4/4.5; blue; for wire Ø 1.4 - 1.6; L=720mm		123.0032.1
110	Neck liner 1.8/4.4 brass for wire Ø 0.8 - 1.0; L=280mm		120.D145
110	Neck liner 1.8/4.4 brass for wire Ø 0.8 - 1.0; L=720mm		120.0080.1
110	Neck liner 2.2/4.4 brass for wire Ø 1.2 - 1.4; L=280mm		120.D146
110	Neck liner 2.2/4.4 brass for wire Ø 1.2 - 1.4; L=720mm		120.0081.1
110	Neck liner PTFE 2.0/4.0; red; for wire Ø 1.0 - 1.2; L=280mm		126.D002
110	Neck liner PTFE 2.0/4.0; red; for wire Ø 1.0 - 1.2; L=720mm		126.0084.1
110	Neck liner PTFE 2.7/4.7; yellow; for wire Ø 1.4 - 1.6; L=280mm		126.D003
110	Neck liner PTFE 2.7/4.7; yellow; for wire Ø 1.4 - 1.6; L=720mm		126.0085.1
110	Neck liner BPLorange 2.074.7; for wire Ø 0.8 - 1.2; L=280mm		149.0418.1
110	Neck liner BPLorange 2.0/4.7; for wire Ø 0.8 - 1.2; L=720mm		149.0419.1
110	Neck liner BPLpetrol 2.7/4.7; for wire Ø 1.4 - 1.6; L=280mm		149.0420.1
110	Neck liner BPLpetrol 2.7/4.7; for wire Ø 1.4 - 1.6; L=720mm		149.0421.1
<b>Torch liner</b>		<b>for 3.0m</b>	<b>for 4.0m</b>
120	Torch liner insulated; 2.0/4.5; red; wire Ø 1.0 - 1.2	124.0111	124.0112
120	Torch liner insulated; 2.5/4.5; yellow; wire Ø 1.4 - 1.6	124.0114	124.0115
130	PTFE liner 2.0/4.0; red; wire Ø 1.0 - 1.2	126.0021	126.0026
130	PTFE liner 2.7/4.7; yellow; wire Ø 1.4 - 1.6	126.0039	126.0042
130	Carbon PTFE liner 2.0/4.0; wire Ø 1.0 - 1.2	127.0005	127.0007
130	Carbon PTFE liner 2.7/4.7; wire Ø 1.4 - 1.6	127.0010	127.0012
130	Liner BPLorange 2.0/4.7; wire Ø 0.8 - 1.2	126.0069	126.0070
130	Liner BPLpetrol 2.7/4.7; wire Ø 1.4 - 1.6	126.0072	126.0073
131	Nipple for PTFE liner with outer diameter 4.0		20 pcs
131	Nipple for PTFE liner with outer diameter 4.7		20 pcs
132	O-Ring 3.5x1.5		20 pcs
133	Guiding tube for PTFE liner up to outer diameter 4.0mm (L=200 mm)		10 pcs
200	Spanner for ABIMIG®		191.D045
no pic.	Castellated spanner for mounting insulating bush pos. 8		191.0178.1
no pic.	Sealing grease silicone-free	10g tin	192.0078
no pic.	Sealing plug cpl. for pos. 7		191.0176.1
<ul style="list-style-type: none"> <li>Standard equipment</li> </ul>			

**KURT HAUFE**

Schweißtechnik GmbH & Co KG  
ein Unternehmen der ABICOR Gruppe

D-01159 Dresden, Altlibtau 9  
Telefon: 0351/4203-30  
Telefax: 0351/4203-340  
e-mail: haufe@binzel-abicor.com  
internet: www.binzel-abicor.com



www.binzel-abicor.com

